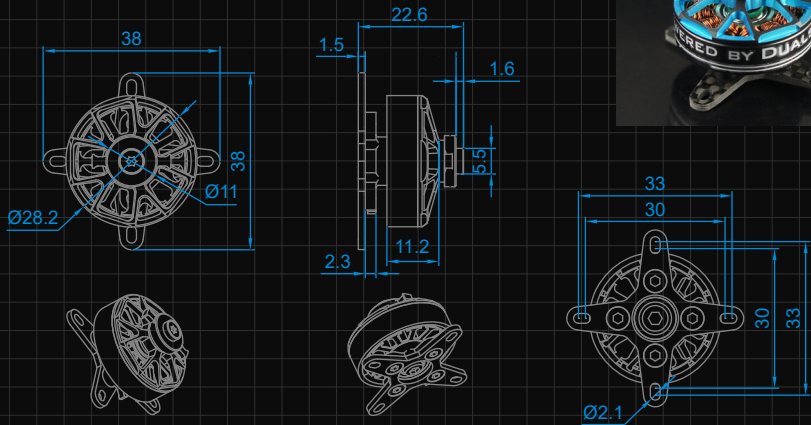


Dimension 尺寸图



* Please ask us for 3D design drawings.

Specification 参数

NAME 型号	XM2305TY-20	XM2305TY-26	XM2305TY-31
SKU 商品编码	52136	52137	52138
RPM / V (KV) KV值	2370	1830	1550
Weight (g) 重量		28	
Diameter (mm) 直径		28.2	
Length (mm) 长度		22.6	
Diameter of Shaft(mm) 轴径		4, hollow	
Pitch of holes (mm) 安装孔距		16/16,30/33 w/ motor mount	
Input Connectors 输入插头		GC2.0 , 3 Pairs	
Slots & Poles 槽数, 极数		12N14P	
Io@10V(A)空载电流	1.05 @7V	0.90	0.75
Resistance(Ri)(mOhm) 电机内阻	48.2	77	117
No. of Cells(LiPo) 适用电池	2'..3	2'..3	2'..3 ¹
Max. EfficiencyCurrent(A) 效率电流	15	12	9.8
Max. Burst Current (15S)[A] 峰值电流	30	24	19.7
Max. Power(15S)[W] 峰值功率	240	192	236
Torque (mNM) 扭矩	175	179	180
Recommended ESC 推荐调速器	XC-33U-Lite 15° (Middle)	XC-33U-Lite 15° (Middle)	XC-22-Lite 15° (Middle)
Propeller 螺旋桨	2S ¹ : 8x4, 8x5, 9x4, 8x4 (3-Blade) 3S: 6x3, 6x4, 7x3, 6x3 (3-Blade)	2S ¹ : 9x5, 9x6, 10x5, 9x5 (3-Blade) 3S: 7x3, 7x4, 8x4 ² , 7x4 (3-Blade)	2S: 10x5, 10x6, 11x5, 10x5 (3-Blade) 3S ¹ : 8x4, 8x5, 9x4 ² , 8x5 (3-Blade)
Applications 适用级别	Freestyle, Speed	3D small, freestyle	3D small, freestyle

注: ¹ Suggested working voltage(NOC) 建议工作电压(串联节数)

² Good throttle management needed 可在有效控制油门的情况下使用

7.4V

XM2305TY-20 (2370KV)

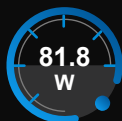
Motor @ Optimum Efficiency 优化效率点



Current
电流



Revolutions
转速



electric Power
电功率



mech. Power
机械功率



Efficiency
效率

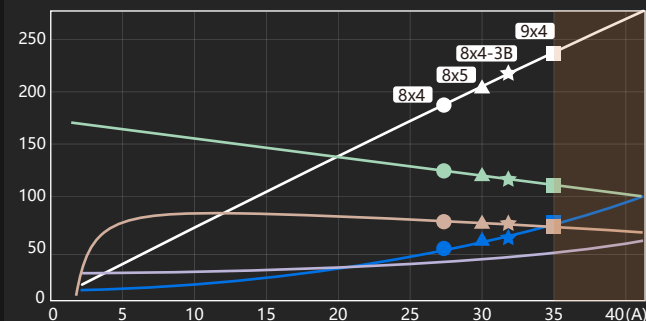
EL.POWER 电功率 [IN 1W]

EFFICIENCY 效率 [%]

MAX. REVOLUTIONS
转速 [IN 100RPM]

WASTE POWER
损耗功率 [IN 1W]

MOTOR CASE TEMP.
马达壳体温度 [°C]



Voltage 电压 (V)	Propeller 螺旋桨 (RPM)	Throttle 油门 (%)	Current 电流 (A)	el. Power 输入功率 (W)	Efficiency 效率 (%)	Thrust 静拉力 (g)	Spec. Thrust 螺旋桨效率 (g/W)
				8x4			
	7200	50	4.6	33.3	80.1	286	8.6
	8100	58	6.6	47.6	80	362	7.6
	9900	73	12.3	88	78.9	540	6.1
	10800	82	16.3	115.3	78.2	643	5.6
	11700	91	21.1	148.1	77.4	754	5.1
	12541	100	26.9	186.7	76	867	4.6
				8x5			
	7200	52	5.9	42.4	78.7	357	8.4
	8100	60	8.5	60.9	78.1	452	7.4
	9000	68	11.9	84.4	77.3	558	6.6
	9900	77	16.1	113.7	76.4	675	5.9
	10800	87	21.4	149.6	75.3	803	5.4
	11955	100	30.4	209.3	73.5	985	4.7
				9x4			
	7200	55	7.8	56	76.4	407	7.3
	8000	63	10.9	77.9	75.4	502	6.4
	8800	71	14.9	105.1	74.3	608	5.8
	9600	79	19.8	138.6	73.2	723	5.2
	10400	89	25.9	179	72	849	4.7
	11274	100	34.5	235.2	70.3	997	4.2
				8x4 (3-Blade)			
	7200	53	6.6	47.5	77.9	364	7.7
	8000	60	9.2	65.7	77.2	450	6.8
	8800	68	12.4	88.4	76.3	544	6.2
	9600	76	16.5	116.2	75.4	648	5.6
	10400	85	21.4	149.8	74.4	760	5.1
	11680	100	32.1	219.8	72.2	959	4.4

7.4V
(2S LIPO)

11.1V

XM2305TY-20 (2370KV)

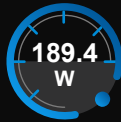
Motor @ Optimum Efficiency 优化效率点



Current
电流



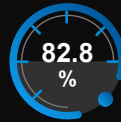
Revolutions
转速



electric Power
电功率



mech. Power
机械功率



Efficiency
效率

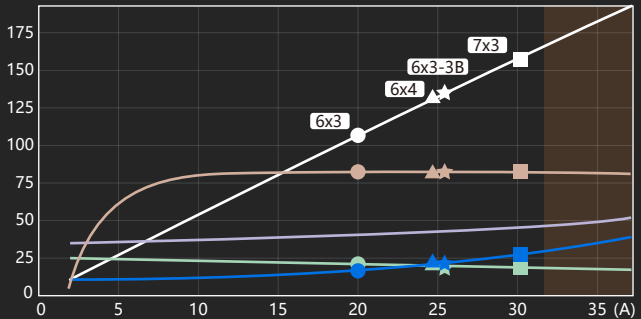
EL.POWER 电功率 [IN 2W]

EFFICIENCY 效率 [%]

MAX. REVOLUTIONS
转速 [IN 1000RPM]

WASTE POWER
损耗功率 [IN 1W]

MOTOR CASE TEMP.
马达壳体温度 [°C]



Voltage 电压 (V)	Propeller 螺旋桨 (RPM)	Throttle 油门 (%)	Current 电流 (A)	el. Power 输入功率 (W)	Efficiency 效率 (%)	Thrust 静拉力 (g)	Spec. Thrust 螺旋桨效率 (g/W)
6x3							
12800	54	54	3.9	43.1	82.6	286	6.6
14400	62	62	5.6	60.8	83.4	362	5.9
16000	70	70	7.6	83	83.8	446	5.4
17600	77	77	10.2	110.3	84	540	4.9
19200	86	86	13.3	143.2	84	643	4.5
21890	100	100	20.3	215.8	82.8	835	3.9
6x4							
12800	56	56	5.2	56.9	83.5	381	6.7
14400	64	64	7.4	80.7	83.8	482	6
16000	72	72	10.2	110.7	83.8	595	5.4
17600	80	80	13.7	147.6	83.6	720	4.9
19200	89	89	18	192.4	83.3	857	4.5
21093	100	100	24.7	260.7	81.9	1034	4
7x3							
12000	54	54	6	65.3	83.2	399	6.1
13500	61	61	8.6	93.1	83.1	505	5.4
15000	69	69	11.9	128.2	82.8	623	4.9
16500	78	78	16.1	171.7	82.4	754	4.4
18000	87	87	21.2	224.4	81.8	897	4
20039	100	100	30.6	318.8	80	1112	3.5
6x3 (3-Blade)							
12800	56	56	5.4	59	83.5	364	6.2
14400	64	64	7.7	83.7	83.8	461	5.5
16000	72	72	10.6	114.9	83.7	569	5
17600	80	80	14.3	153.4	83.5	689	4.5
19200	89	89	18.8	199.9	83.2	820	4.1
20983	100	100	25.3	266.9	81.8	979	3.7

11.1V
(3S LIPO)

7.4V

XM2305TY-26 (1830KV)

Motor @ Optimum Efficiency 优化效率点



Current
电流



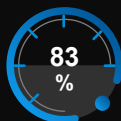
Revolutions
转速



electric Power
电功率



mech. Power
机械功率



Efficiency
效率

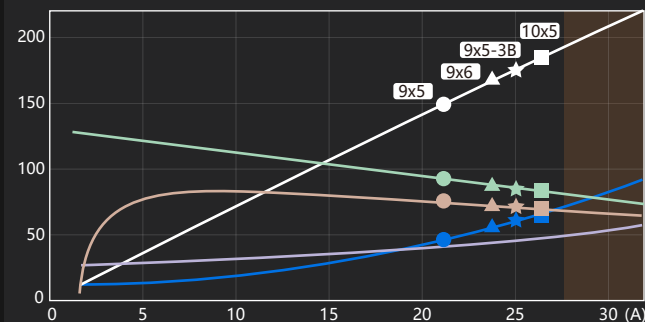
EL. POWER 电功率 [IN 1W]

EFFICIENCY 效率 [%]

MAX. REVOLUTIONS
转速 [IN 100RPM]

WASTE POWER
损耗功率 [IN 1W]

MOTOR CASE TEMP.
马达壳体温度 [°C]



Voltage 电压 (V)	Propeller 螺旋桨 (RPM)	Throttle 油门 (%)	Current 电流 (A)	el. Power 输入功率 (W)	Efficiency 效率 (%)	Thrust 静拉力 (g)	Spec. Thrust 螺旋桨效率 (g/W)
7.4V (2S LIPO)	9x5						
	5400	52	4.1	29.6	76.2	286	9.7
	6000	59	5.6	40.9	75.7	353	8.6
	7200	73	10.1	72.2	74.1	508	7
	7800	81	13	92.9	73.2	597	6.4
	8400	90	16.6	117.6	72.3	692	5.9
	9083	100	21.6	152.2	70.8	809	5.3
	9x6						
	5400	54	5	36.4	74.4	343	9.4
	6000	61	7	50.5	73.5	424	8.4
	6600	69	9.5	68.2	72.5	513	7.5
	7200	77	12.6	89.8	71.5	610	6.8
	7800	86	16.4	116.1	70.3	716	6.2
	8693	100	23.7	166.1	68.3	889	5.4
	10x5						
4800	49	4.6	33.3	72.4	310	9.3	
5400	57	6.7	48.2	71.3	392	8.1	
6600	74	12.8	91.4	68.7	586	6.4	
7200	83	17.1	121.1	67.3	697	5.8	
7800	93	22.5	157.2	65.9	819	5.2	
8168	100	26.5	184.4	64.8	898	4.9	
9x5 (3-Blade)							
5400	55	5.9	43	72.7	365	8.5	
6000	63	8.3	59.8	71.6	450	7.5	
6600	72	11.3	81	70.3	545	6.7	
7200	81	15.1	107.1	69.1	648	6.1	
7800	90	19.7	138.8	67.8	761	5.5	
8383	100	25.4	176.9	66.2	879	5	

11.1V

XM2305TY-26 (1830KV)

Motor @ Optimum Efficiency 优化效率点



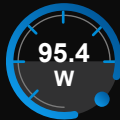
Current
电流



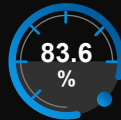
Revolutions
转速



electric Power
电功率



mech. Power
机械功率



Efficiency
效率

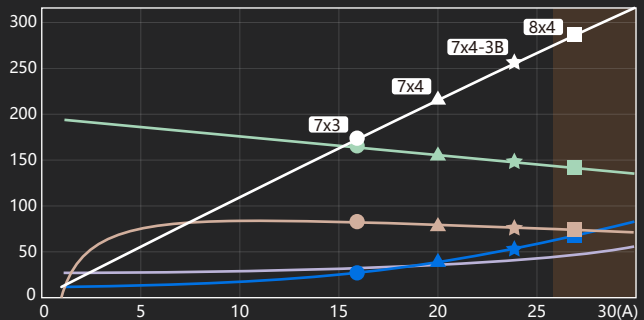
EL.POWER 电功率 [IN 1W]

EFFICIENCY 效率 [%]

MAX. REVOLUTIONS
转速 [IN 100RPM]

WASTE POWER
损耗功率 [IN 1W]

MOTOR CASE TEMP.
马达壳体温度 [°C]



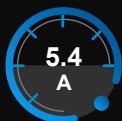
Voltage 电压 (V)	Propeller 螺旋桨 (RPM)	Throttle 油门 (%)	Current 电流 (A)	el. Power 输入功率 (W)	Efficiency 效率 (%)	Thrust 静拉力 (g)	Spec. Thrust 螺旋桨效率 (g/W)
7x3							
9600	54	54	3.1	33.8	82.3	255	7.5
10800	61	61	4.4	47.7	83.1	323	6.8
12000	69	69	6	65.2	83.4	399	6.1
13200	77	77	8	86.8	83.4	482	5.6
14400	85	85	10.4	112.8	83.3	574	5.1
16522	100	100	16.2	173.4	82.1	756	4.4
7x4							
9600	55	55	4.1	45.1	82.4	340	7.6
10800	63	63	5.9	64	82.5	431	6.7
12000	71	71	8.1	88	82.4	532	6
13200	80	80	10.9	117.6	82	643	5.5
14400	89	89	14.3	153.6	81.6	766	5
15843	100	100	19.6	208.9	80.2	927	4.4
8x4							
8800	54	54	5.6	61	80	427	7
9900	62	62	8.1	87.5	79.4	540	6.2
11000	71	71	11.2	121.3	78.6	667	5.5
12100	80	80	15.3	163.4	77.6	807	4.9
13200	89	89	20.2	214.8	76.6	960	4.5
14362	100	100	27.1	284.5	75	1137	4
7x4 (3-Blade)							
8800	52	52	4.5	48.7	81.3	365	7.5
9900	60	60	6.4	69.5	81	461	6.6
11000	68	68	8.8	95.9	80.6	570	5.9
12100	76	76	11.9	128.6	79.9	689	5.4
13200	85	85	15.7	168.5	79.2	820	4.9
14975	100	100	24	253.5	77.3	1056	4.2

11.1V
(3S LIPO)

7.4V

XM2305TY-31 (1550KV)

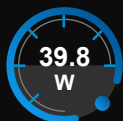
Motor @ Optimum Efficiency 优化效率点



Current
电流



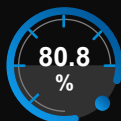
Revolutions
转速



electric Power
电功率



mech. Power
机械功率



Efficiency
效率

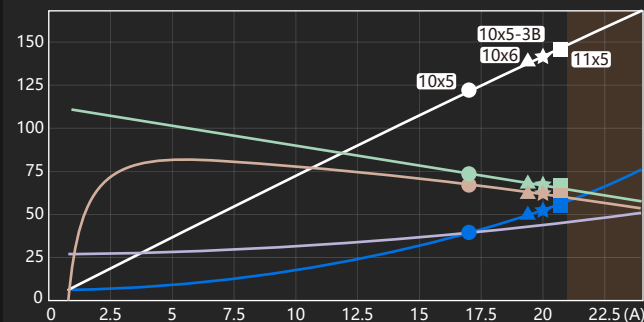
EL.POWER 电功率 [IN 1W]

EFFICIENCY 效率 [%]

MAX. REVOLUTIONS
转速 [IN 100RPM]

WASTE POWER
损耗功率 [IN 1W]

MOTOR CASE TEMP.
马达壳体温度 [°C]



Voltage 电压 (V)	Propeller 螺旋桨 (RPM)	Throttle 油门 (%)	Current 电流 (A)	el. Power 输入功率 (W)	Efficiency 效率 (%)	Thrust 静拉力 (g)	Spec. Thrust 螺旋桨效率 (g/W)
10x5							
4500	54	54	3.8	27.9	71.2	272	9.7
5000	62	62	5.3	38.8	70.4	336	8.7
5500	70	70	7.2	52.4	69.4	407	7.8
6000	78	78	9.6	69.1	68.2	484	7
6500	87	87	12.5	89.4	67.1	568	6.4
7162	100	100	17.4	123.7	65.2	690	5.6
10x6							
4000	49	49	3.3	24	69.8	258	10.8
4500	57	57	4.8	34.7	68.9	327	9.4
5000	65	65	6.7	48.4	67.7	404	8.3
6000	83	83	12.2	87.1	65	581	6.7
6500	93	93	15.9	113.1	63.6	682	6
6822	100	100	18.9	133.8	62.5	751	5.6
11x5							
4000	52	52	4.2	30.5	67.2	287	9.4
4400	59	59	5.7	41.3	66	347	8.4
5200	73	73	9.8	70.7	63.6	484	6.8
5600	81	81	12.6	90.1	62.3	562	6.2
6000	90	90	15.9	113.1	61.1	645	5.7
6447	100	100	20.5	144.9	59.4	744	5.1
10x5 (3-Blade)							
4000	51	51	3.9	28.4	68	275	9.7
4500	59	59	5.7	41.3	66.7	347	8.4
5000	68	68	8	57.9	65.2	429	7.4
5500	78	78	11	78.9	63.7	519	6.6
6000	88	88	14.7	104.9	62.2	618	5.9
6554	100	100	20.1	141.7	60.3	737	5.2

7.4V
(2S LIPO)

11.1V

XM2305TY-31 (1550KV)

Motor @ Optimum Efficiency 优化效率点



Current
电流



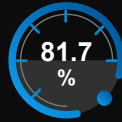
Revolutions
转速



electric Power
电功率



mech. Power
机械功率



Efficiency
效率

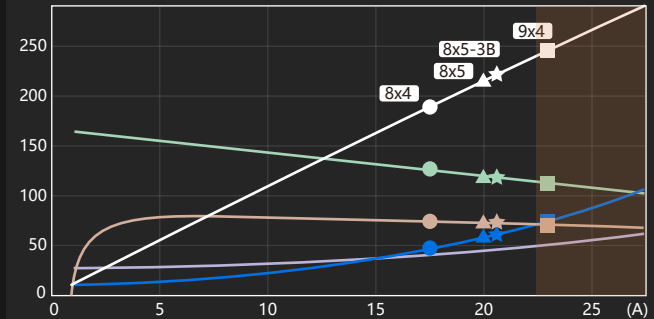
EL.POWER 电功率 [IN 1W]

EFFICIENCY 效率 [%]

MAX. REVOLUTIONS
转速 [IN 100RPM]

WASTE POWER
损耗功率 [IN 1W]

MOTOR CASE TEMP.
马达壳体温度 [°C]



Voltage 电压 (V)	Propeller 螺旋桨 (RPM)	Throttle 油门 (%)	Current 电流 (A)	el. Power 输入功率 (W)	Efficiency 效率 (%)	Thrust 静拉力 (g)	Spec. Thrust 螺旋桨效率 (g/W)
11.1V (3S LIPO)	8x4						
	7200	51	3.1	33.9	78.9	286	8.4
	8100	58	4.4	48.2	78.9	362	7.5
	9000	66	6.1	66.5	78.5	446	6.7
	10800	83	10.8	116.8	77.2	643	5.5
	11700	91	13.9	150	76.4	754	5
	12526	100	17.6	188.8	75	865	4.6
	8x5						
	7200	53	3.9	43	77.6	357	8.3
	8100	61	5.7	61.7	77.1	452	7.3
	9000	69	7.9	85.5	76.3	558	6.5
	9900	78	10.6	115.2	75.4	675	5.9
	10800	87	14.1	151.5	74.4	803	5.3
	11965	100	20	213.1	72.4	986	4.6
	9x4						
	7200	55	5.2	56.8	75.3	407	7.2
8000	63	7.3	78.9	74.4	502	6.4	
8800	71	9.8	106.6	73.3	608	5.7	
9600	80	13	140.5	72.2	723	5.1	
10400	89	17	181.5	71.1	849	4.7	
11308	100	22.8	241.4	69.2	1003	4.2	
8x5 (3-Blade)							
7200	54	4.4	48.1	76.8	364	7.6	
8100	62	6.4	69.2	76	461	6.7	
9000	71	8.9	96.1	75.1	569	5.9	
9900	80	12	129.8	74	689	5.3	
10800	89	16	171.1	72.9	820	4.8	
11701	100	21.1	224.5	71.1	962	4.3	