

AEROBATIC SAILPLANE ELECTRO SAILPLANE

FLY

Manufactured by:

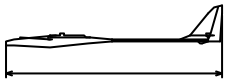
TOPMODEL CZ

679 05 HABRŮVKA 100 - CZECH REPUBLIC

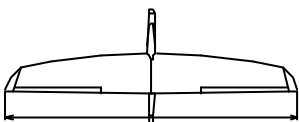
www.topmodelcz.cz

e-mail: info@topmodelcz.cz

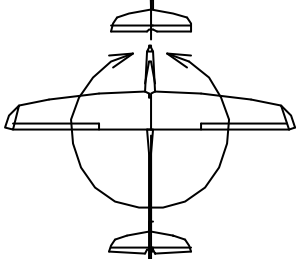
Order N°: 020110



1350mm



1995mm



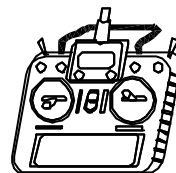
40,2dm²

44,7-52,2g/dm²



1,8 - 2,1kg

Radio system you'll need :



5channel
with
4 servos



MVVS 4,6/840 sport



3S Lixx 2,2-3,2Ah



HQ mod.

*Není-li uvedeno jinak, všechny
neoznačené míry jsou v milimetrech
UNLES STATED, ALL DIMENSIONS
ARE IN MILIMETERS*

	GB-USA	PART LIST		
Part #	Part name	Material, dimensions	Loose	In bag
	building instruction		01	-
1	fuselage	fibreglass	01	-
1-1	engine mount	fibreglass 3mm	-	01
1-2	servo tray	plywood 4x67x204mm	-	01
1-3	link support	balsa 10x18x25mm	-	01
1-4	tow hook	steel Ø3, washer, nut M3	-	01+01+
1-5	tow hook support	plywood 3x16x50mm	-	01
1-CT	cutting template	plywood 3mm	01	-
2	wing	foam core-balsa	02	-
2-1	aileron	foam core-balsa	02	-
2-21	centering pin	steel Ø3 x 30mm	-	01
2-3	hook	steel	-	02
2-4	servo mount	polyurethan 13mm	-	04
2-41	wing servo cover	ABS plastic	-	02
2-5	aileron pushrod	steel Ø1,8mm	-	02
2-6	clevis	MPJ 2110	-	02
2-8	aileron horn	fibreglass plate 1,5mm	-	02
24	wing joiner	carbon rod Ø8 x 305mm	-	01
3	horizontal stabilizer	balsa assembly	-	02
3-21	centering pin	fibreglass Ø3 x 80mm	-	01
3-3	elevator joiner	fibreglass Ø4 x 150mm	-	01
3-5	elevator link	balsa Ø10 x 460mm	01	-
3-5F	elevator link	steel M2x 180mm	-	02
3-5N	thread	2m	-	01
3-6	clevis	metal M2, nut M2	-	02+02
3-8	elevator horn	fibreglass plate 2mm	-	01
4	fin	balsa assembly	01	-
4-3	closing strip	balsa 6mm	-	01
4-5	rudder link	external bowden Ø3x 670mm, internal bowden Ø2x 730mm, steel Ø0,8x 730mm	01 + 01 + 01	-
4-6	clevis	MPJ 2110	-	02
4-7	threaded coupler	MPJ 2012	-	02
4-8	rudder horn	fibreglass plate 1,5mm	-	01
6	canopy	fibreglass	01	-
9-1	canopy ring	steel Ø3, wood 3x5x15mm	-	01+01
6-2	Hatch latch	205022, wood 3x5x15mm	-	01+01
7	stickers			-
11	pinned hinge	MPJ 2502	-	03

	RECOMMENDED	EQUIPMENT	
		Pieces	Item No. www.topmodelcz.com
transmitter	5 channel		
reciever	5 channel		
servo	HS-82MG	2	for ailerons 1HI7297
	HS-485HB	2	for elevator & rudder 1HI3085
motor	MVVS 4,6/840sport	1	2049
controller	SPIN 55	1	1RC23204
spinner	turbo Ø40;5;8	1	201559
propeller	CAM Carbon 13x11"	1	723459
battery	Hyperion G3 VX-3S 2600mAh	1	HP-LG 335-2600-3S

ATTENTION!

This model construction kit is not a toy and is not suitable for children under the age of 14. Incorrect use of this model could cause material damage or personal injury. You are fully responsible for your actions when you use this model.

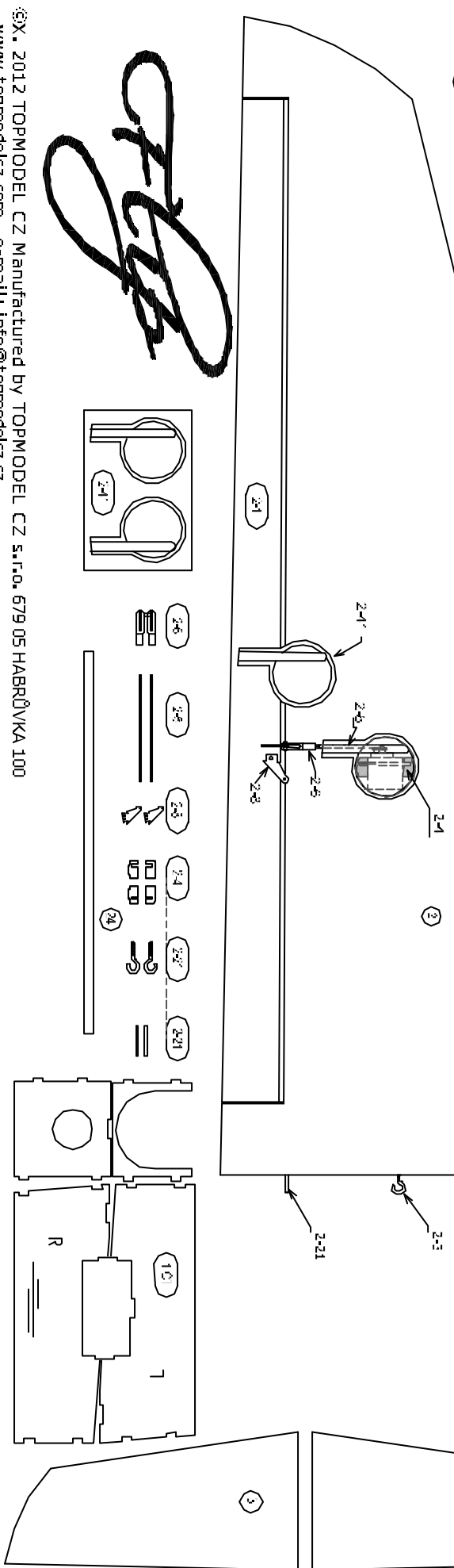
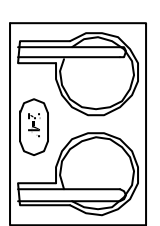
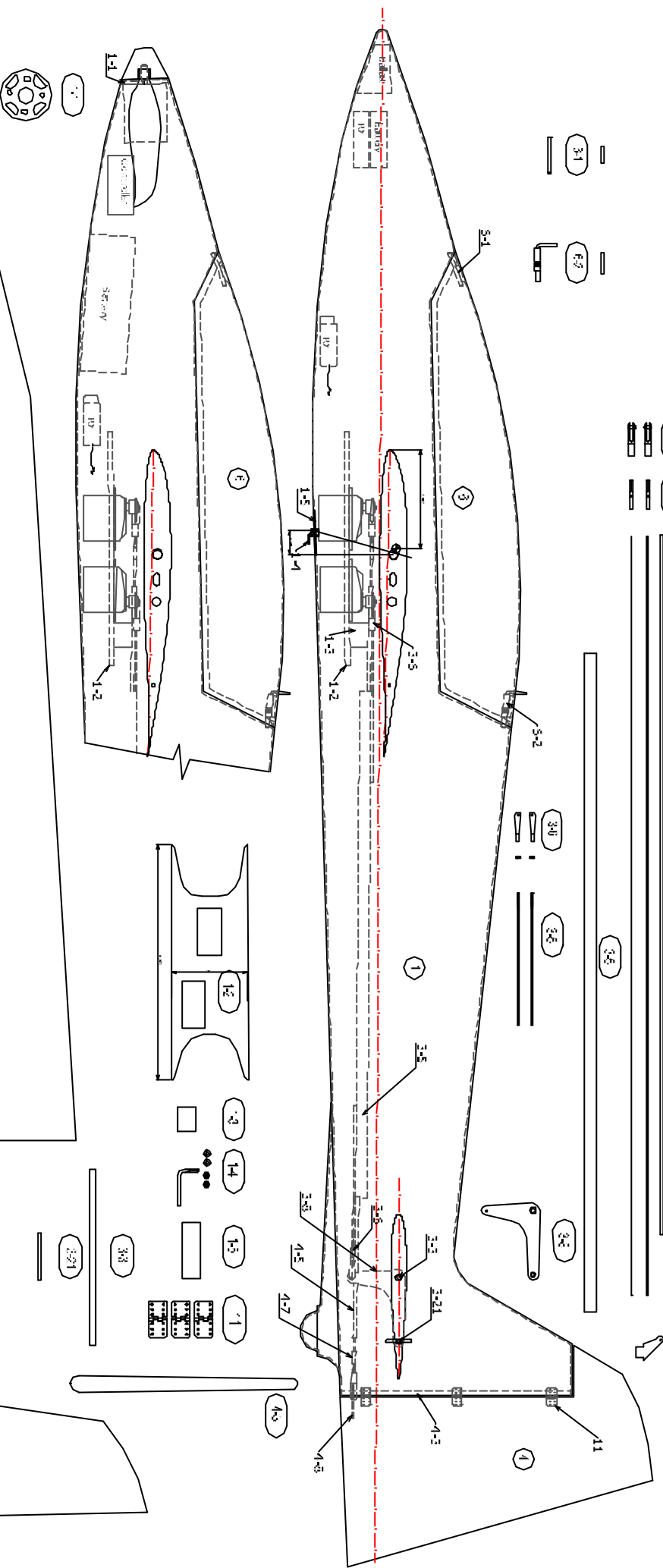
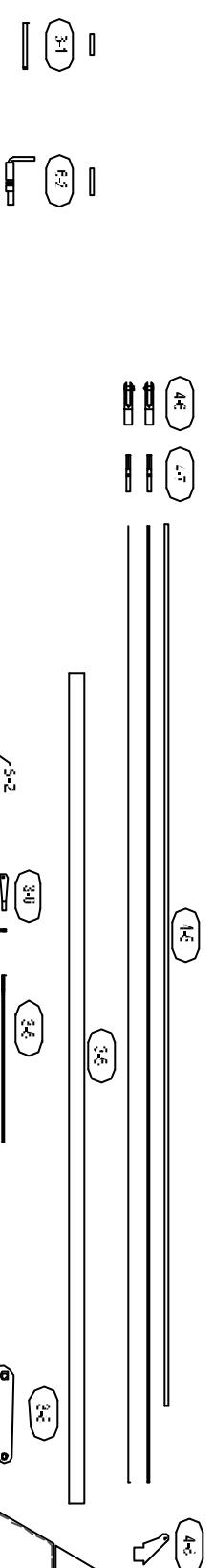
Fly at a safe distance from occupied zones. Before switching on the radio, be sure, that no one else is using the same frequency as you !

Before first take-off check up please the center of gravity, the sense and size of the control surface angle and if model aeroplane parts aren't crooked. The reparation is possible through the use of hot-air dryer.

	CZ	OBSAH STAVEBNICE		
Číslo #	Název	Materiál, rozměry	Volně	V balíčku
	stavební návod		01	-
1	trup	sklolaminát	01	-
1-1	motorová přepážka	sklolaminát 3mm	-	01
1-2	držák serv	překlíčka 4x67x204mm	-	01
1-3	držák bovdenu	balsa 10x18x25mm	-	01
1-4	vlečný háček	ocel Ø3, podložka, matice M3	-	01+01+
1-5	výztuha	překlíčka 3x16x50mm	-	01
1-CT	řezací šablona	překlíčka 3mm	01	-
2	křídlo	polystyren-balsa	02	-
2-1	křídélka	polystyren-balsa	02	-
2-21	aretační kolk	ocel Ø3 x 30mm	-	01
2-3	háček	ocel	-	02
2-4	držák serva	polyuretan 13mm	-	04
2-41	krytka serva	ABS	-	02
2-5	táhlo křidélek	ocel Ø1,8mm	-	02
2-6	koncovka táhla	MPJ 2110	-	02
2-8	páka křidélek	sklolaminát 1,5mm	-	02
24	spojka křídla	uhlíková tyč Ø8 x 305mm	-	01
3	VOP	balsa konstrukční	-	02
3-21	aretační kolk	sklolaminát Ø3 x 80mm	-	01
3-3	spojka VOP	sklolaminát Ø4 x 150mm	-	01
3-5	táhlo VOP	balsa Ø10 x 460mm	01	-
3-5F	táhlo VOP	ocel M2x 180mm	-	02
3-5N	nit	2m	-	01
3-6	koncovka táhla	kovová M2, matice M2	-	02+02
3-8	páka VOP	sklolaminát 2mm	-	01
4	směrovka	balsa konstrukční	01	-
4-3	steven	balsa 6mm	-	01
4-5	táhlo směrovky	vnější bovden Ø3x 670mm, vnitřní bovden Ø2x 730mm, ocel Ø0,8x 730mm	01 + 01 + 01	-
4-6	koncovka táhla	MPJ 2110	-	02
4-7	spojka táhla	MPJ 2012	-	02
4-8	páka směrovky	sklolaminát 1,5mm	-	01
6	kabina	sklolaminát	01	-
9-1	kolík kabiny	ocel Ø3, smrk 3x5x15mm	-	01+01
6-2	uzávěr kabiny	205022, smrk 3x5x15mm	-	01+01
7	obtisky			-
11	závěsy kormidel	MPJ 2502	-	03

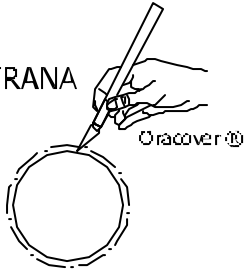
	DOPORUČENÉ PŘÍSLUŠENSTVÍ		
		Kusů	Obj.č. www.topmodekz.com
vysílač	5 kanál		
přijímač	5 kanál		
servo	HS-82MG	2	pro křídélka 1HI7297
	HS-485HB	2	pro výškovku a směrovku 1HI3085
motor	MVVS 4,6/840sport	1	2049
regulátor	SPIN 55	1	1RC23204
kužel	turbo Ø40;5;8	1	201559
vertule	CAM Carbon 13x11"	1	723459
akumulátor	Hyperion G3 VX-3S 2600mAh	1	HP-LG 335-2600-3S

Před prvním startem zkontrolujte jestli nejsou díly modelu zkroucené. Náprava je možná pomocí horkovzdušné pistole. Dále zkontrolujte polohu těžiště, smysla a velikost výchylek kormidel.



TOPMODEL

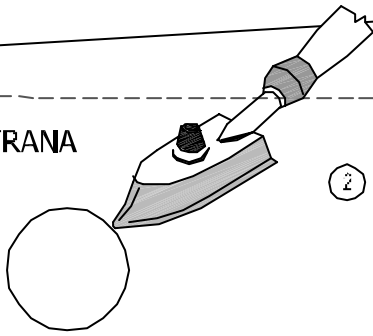
SPODNÍ STRANA
BOTTOM



2

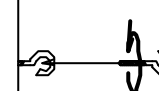
SPODNÍ STRANA
BOTTOM

Oracover

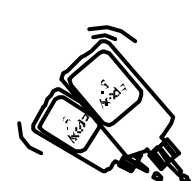


2

2-3



2-21



krok 1.
step 1.

páska
tape

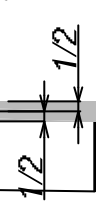
VRCHNÍ STRANA
TOP

krok 2.
step 2.

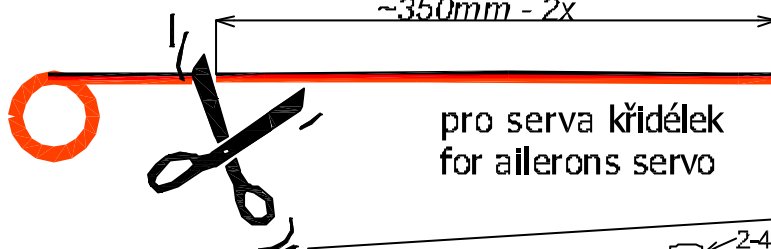
páska 2
tape

2

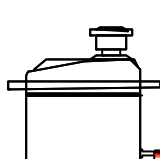
2-1



~350mm - 2x



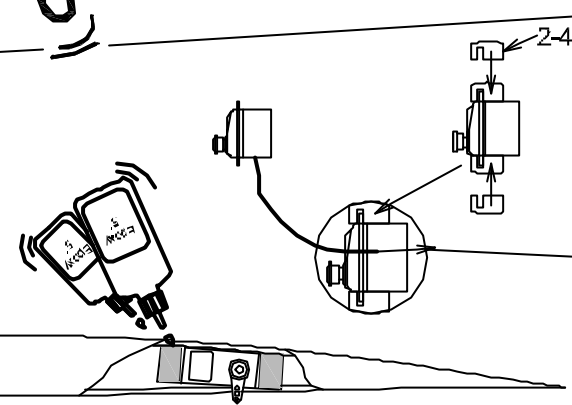
pro serva křidélek
for ailerons servo



~350mm

2-4

2



2-1

2
SPODNÍ STRANA
BOTTOM

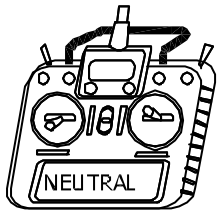
Ø1,5 pro 2-8
Ø1,5 for 2-8

2-1

2
SPODNÍ STRANA
BOTTOM

2-1

!!! A=Á !!!



"Z" 2-5 2-6 2-8

2-1

kontaktní lepidlo (Chemopren)
dry-bond adhesive

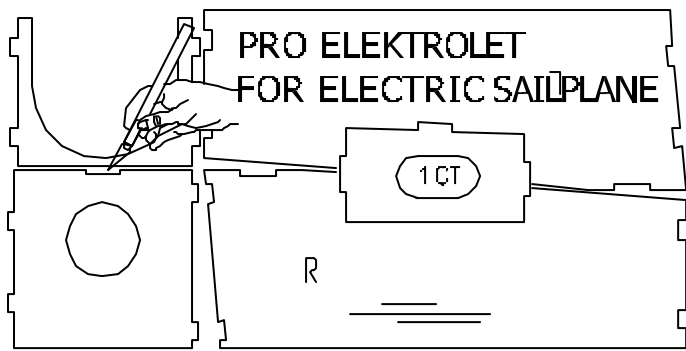
2
SPODNÍ STRANA
BOTTOM

2-41

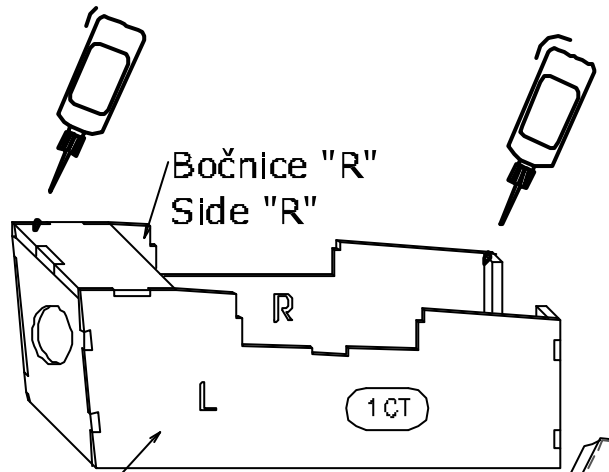
2-4

2-6

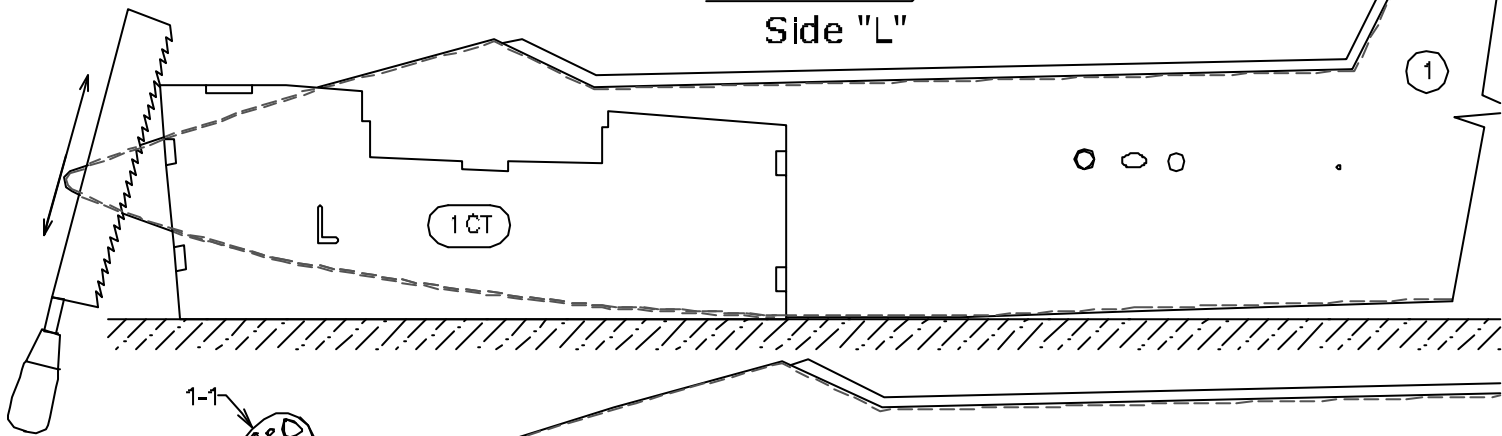
2-1



PRO ELEKTROLET FOR ELECTRIC SAILPLANE



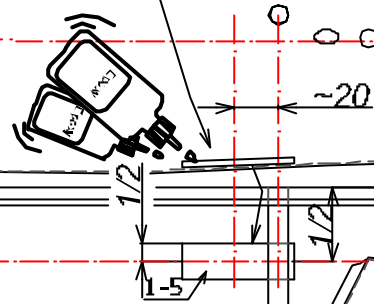
Bočnice "L"
Side "L"



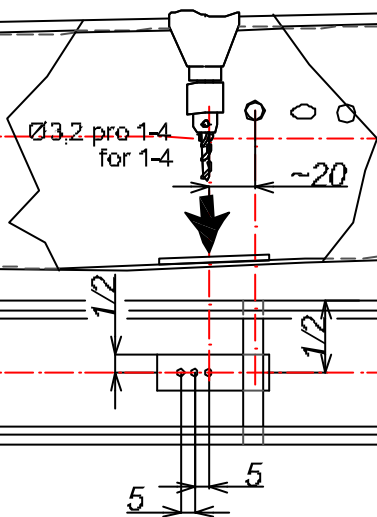
1-1



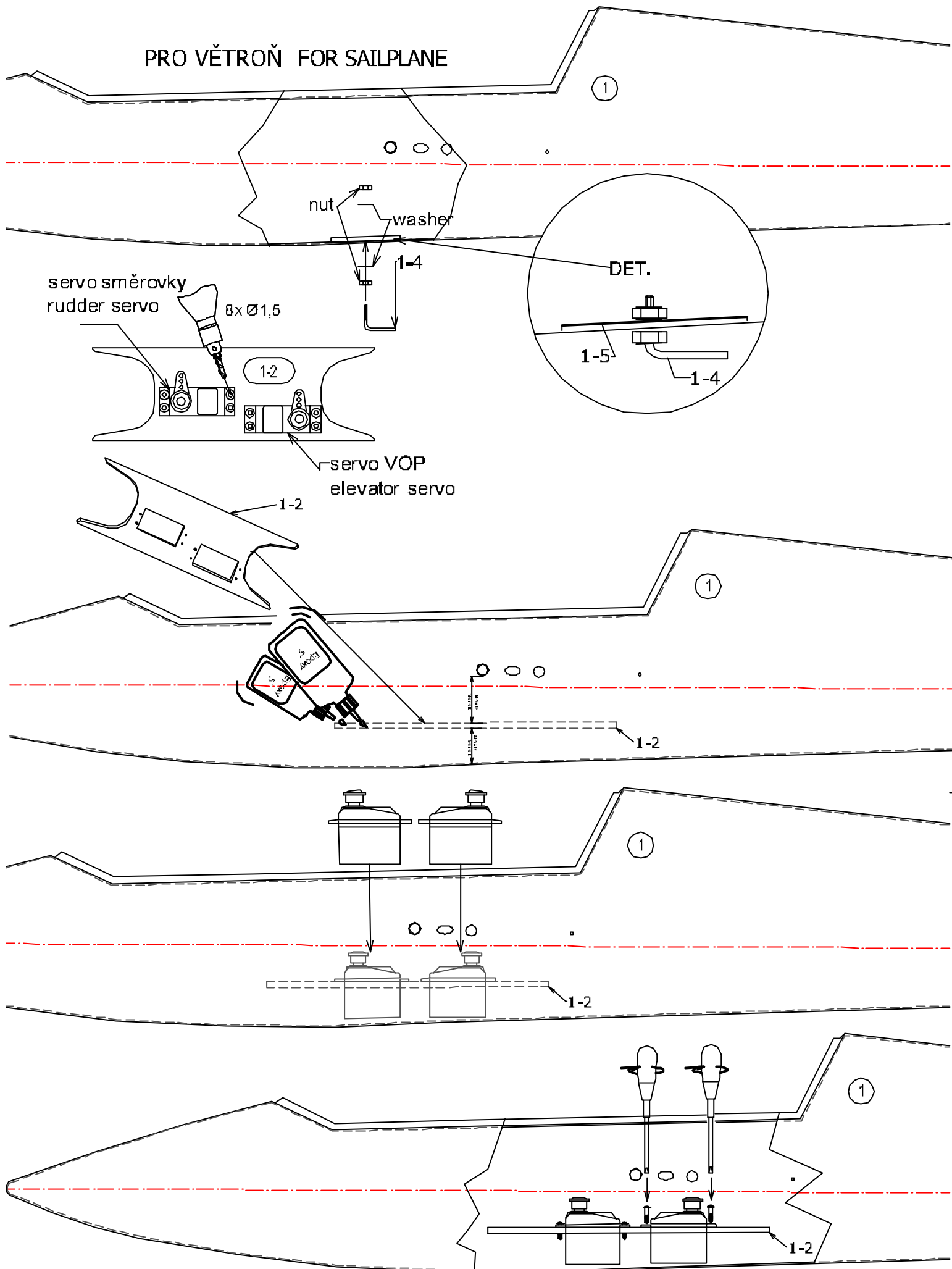
PRO VĚTRŮŇ FOR SAILPLANE

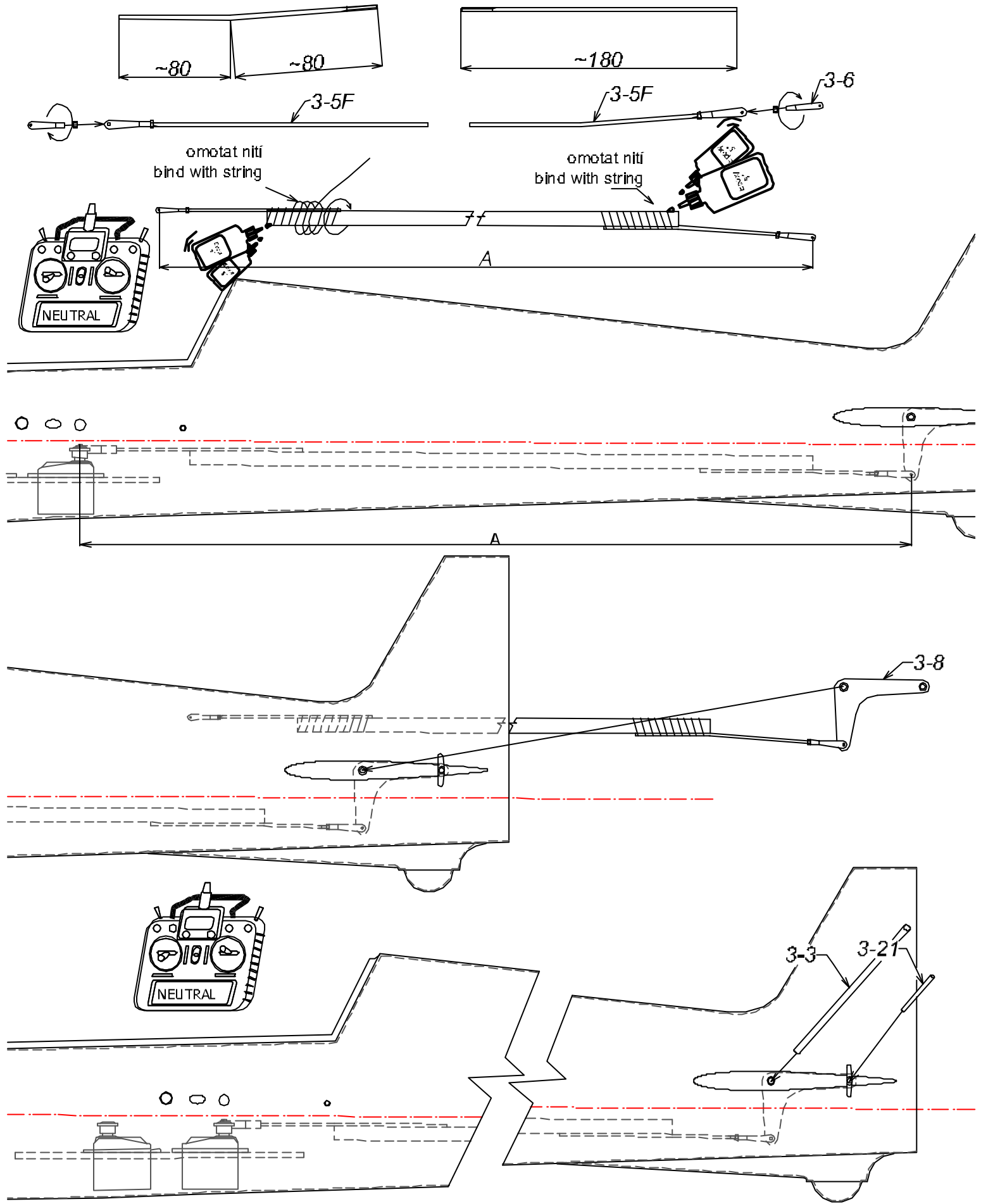


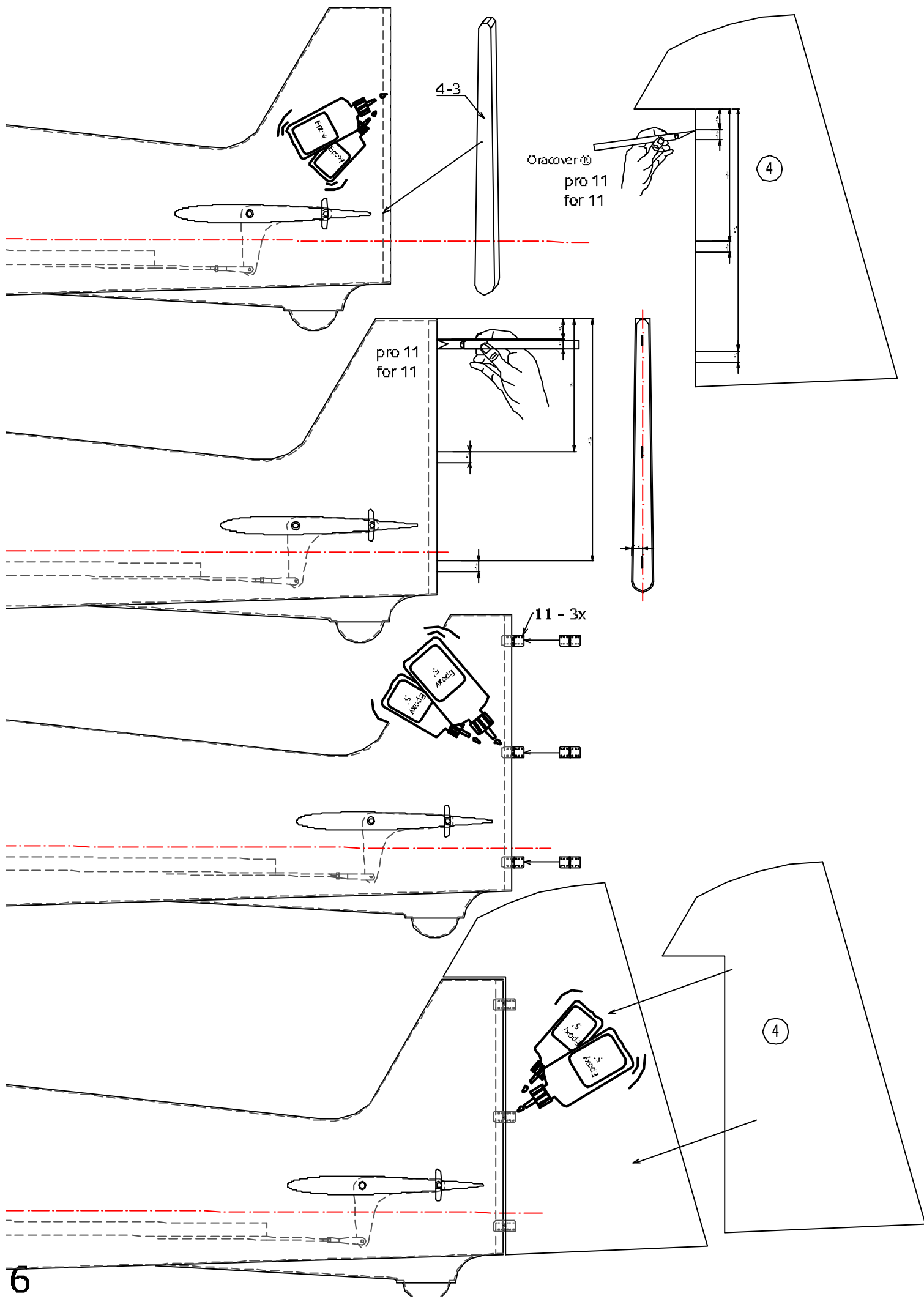
PRO VĚTRŮŇ FOR SAILPLANE

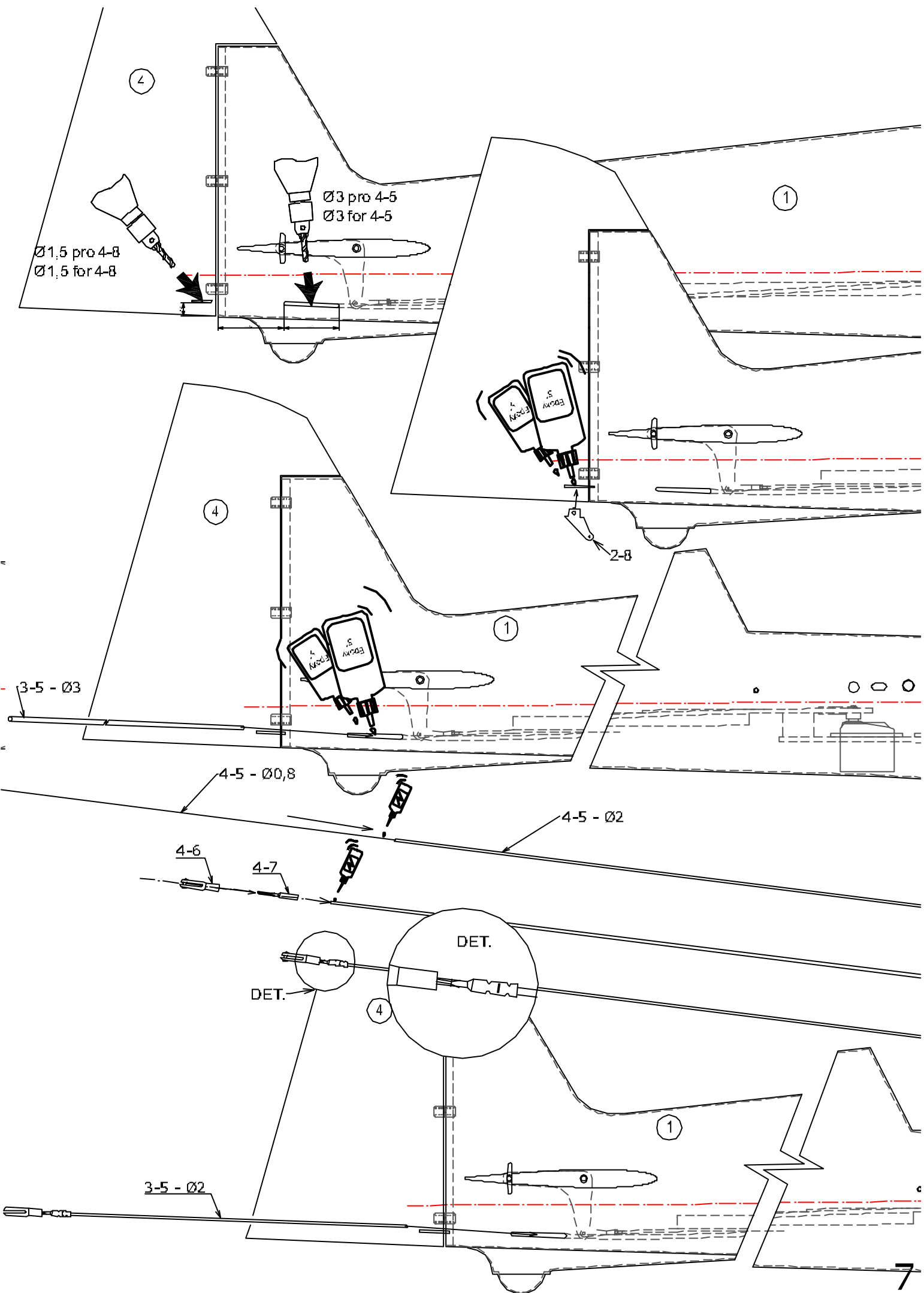


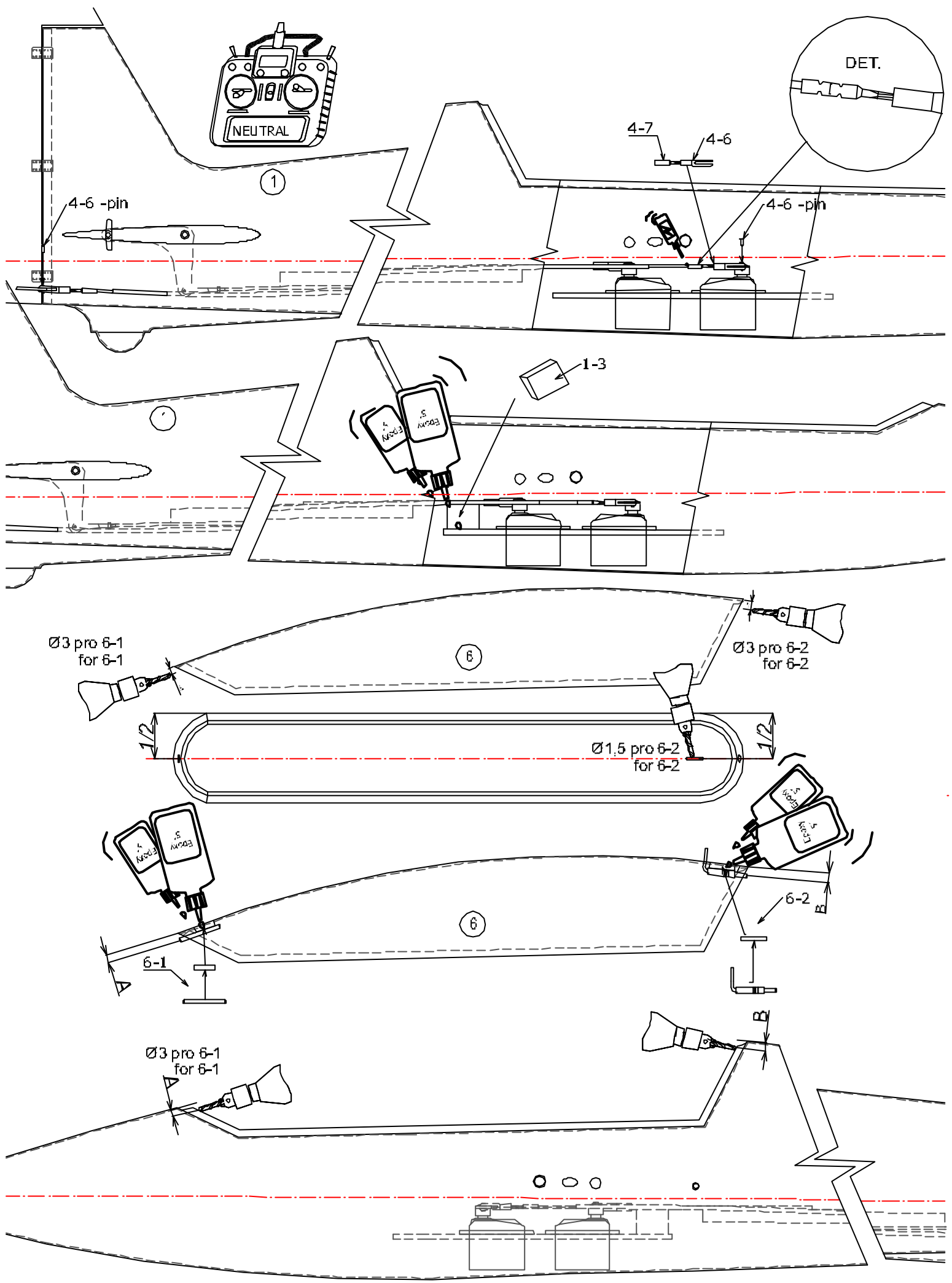
PRO VĚTRŮŇ FOR SAILPLANE



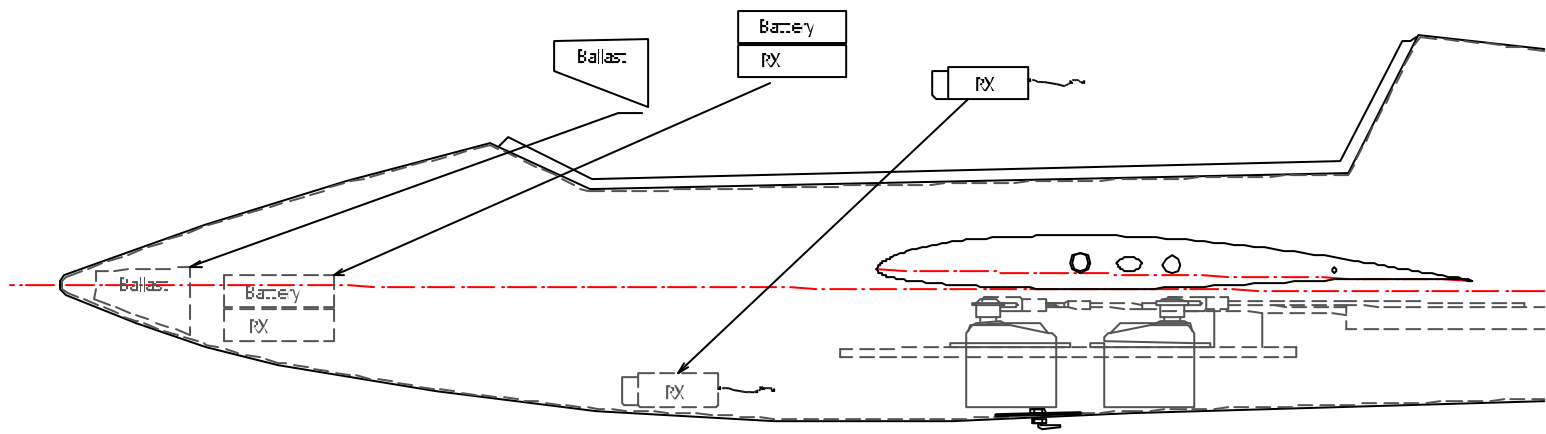




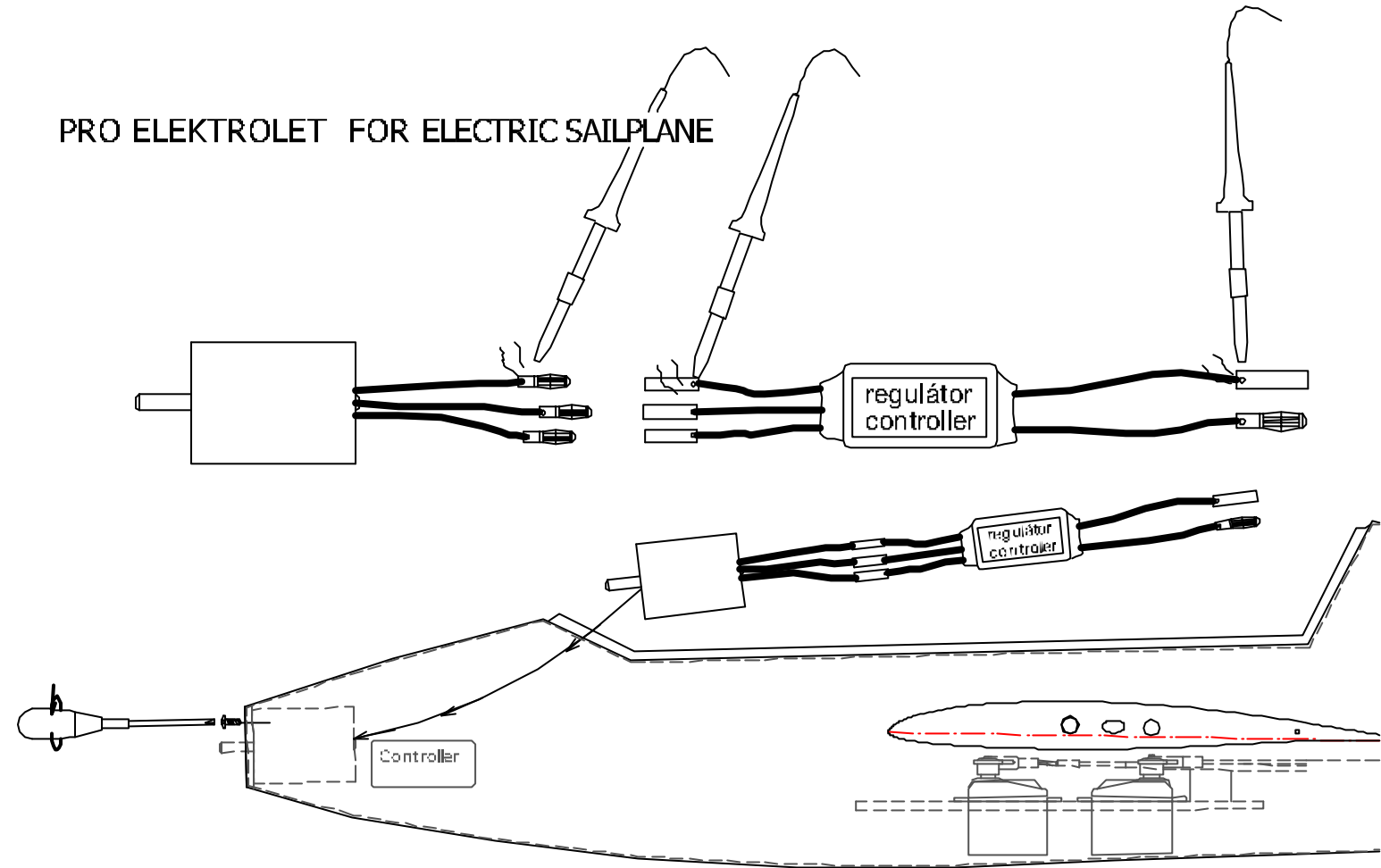




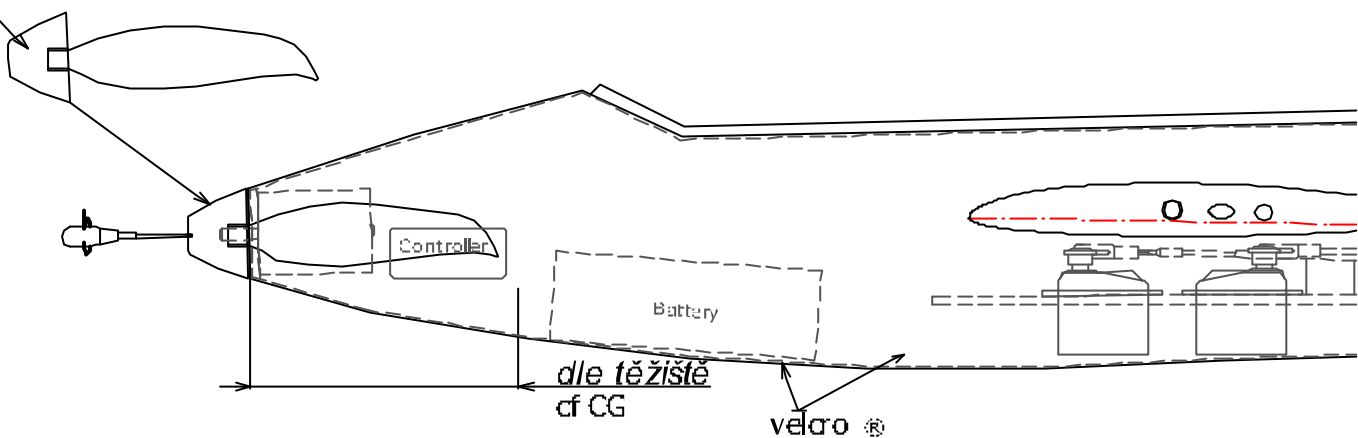
PRO VĚTROŇ FOR SAILPLANE



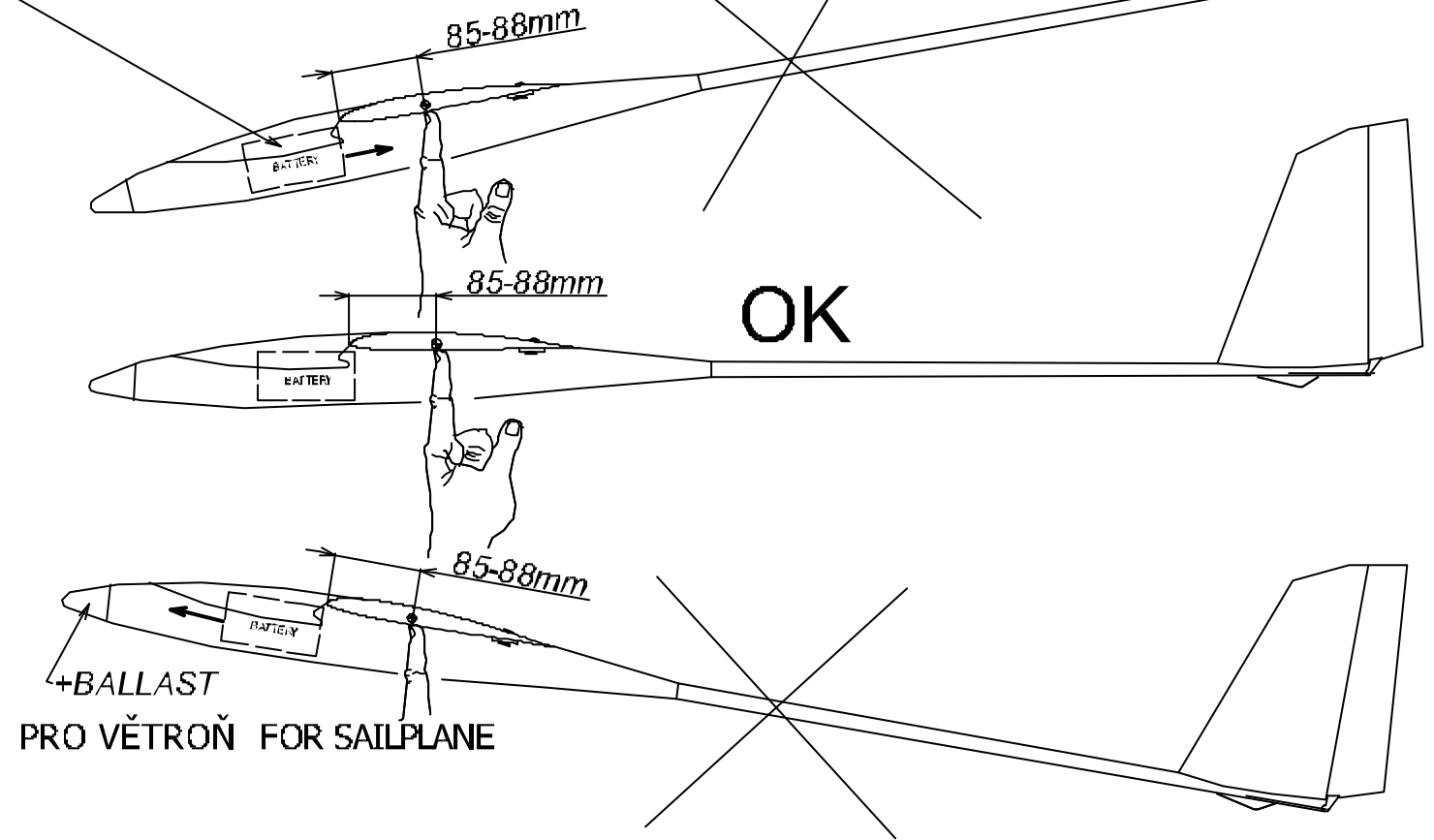
PRO ELEKTROLET FOR ELECTRIC SAILPLANE



"TURBO"



PRO ELEKTROLET FOR ELECTRIC SAILPLANE



Recommended rudder angles :

Ailerons: up 12 - 20mm
 down 6 - 10mm
Elevator: up 10 - 15mm
 down 10 - 15mm
Rudder: 50 - 80mm

Settings for thermal flying:

Ailerons works as flap: down 4 - 1,5mm
Elevator: up 0,5mm

Settings for landing:

Ailerons works as airbrakes (for landing): up 17mm
Elevator for landing: -1-1,5mm (suppression - compensation of overturning moment for flaps)

Doporučené výchylky kormidel:

Křídélka: nahoru 12 - 20mm
 dolů 6 - 10mm
Výškovka: nahoru 10 - 15mm
 dolů 10 - 15mm
Směrovka: 50 - 80mm

Nastavení pro let v termice:

Křídélka jako vztlaková klapka: dolů 4 - 4,5mm
Výškovka nahoru 0,5mm

Nastavení pro přistání:

Křídélka jako brzdy (pro přistání): nahoru 17mm
Výškovka pro přistání: -1-1,5mm (potlačení - kompenzace klopného momentu klapek)