

## 软件下载地址 Download



Dualsky Summit Config V1.41

## 物品清单 List of items



适配器 Adapter x1



HV 系列连接线 x1  
For SUMMIT HV and other devices

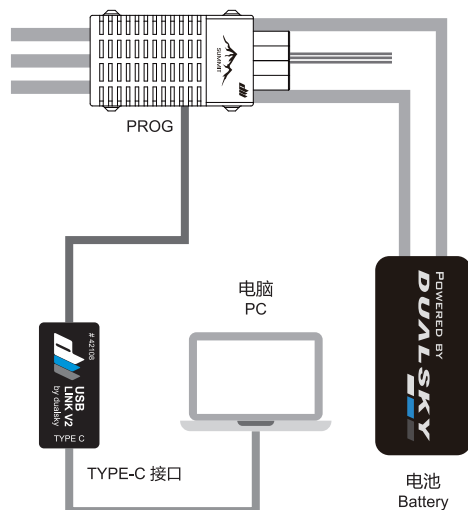


LV 系列连接线 x1  
For SUMMIT LV series

## 操作步骤 Operation steps

- 1 如图所示连接适配器、电调。适配器 TYPE-C 接口通过 USB 线连接至电脑，然后接通电调的电源（动力电池）。电调指示灯应常亮。

Connect adapter and ESC according to wiring diagram. The type-c interface of the adapter is connected to the computer by USB cable. Then connect the power battery to the ESC. ESC indicator should be constant on.



- 2 运行 Config 软件前，请先安装驱动程序。然后打开专用软件。

Install the driver before running the Config software.

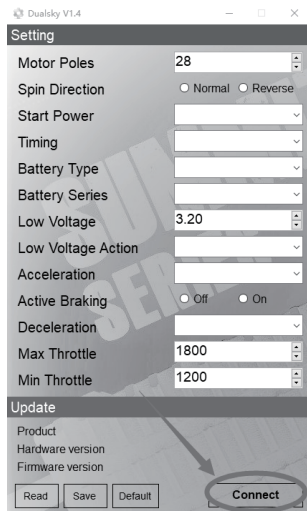
1. CP210xVCPInstaller\_x64

Open Dualsky Summit Config V1.41

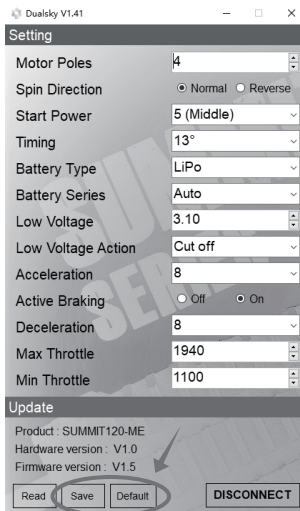


Dualsky Summit Config V1.41

- ③ 点击“Connect”按钮。  
Press “Connect” button.



- ④ 然后便可按照需要进行参数设置。  
Then set the parameter as needed.



点击 **Save** 保存设定参数。

Click **Save** Save the setting values.

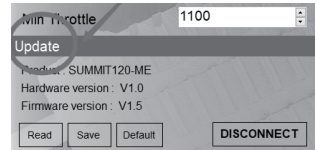
----- 或 or -----

点击 **Default** 恢复设备默认参数，  
再按 **Save** 进行保存。

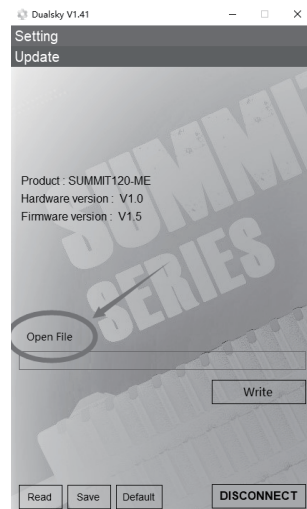
Click **Default** Back to the factory defaults,  
then click **Save** to save the values.

- ⑤ 点击“Update”文字，  
升级设备固件。

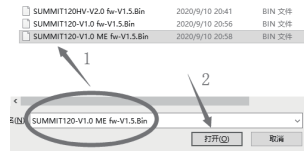
Click “Update” to upgrade the  
firmware of device.



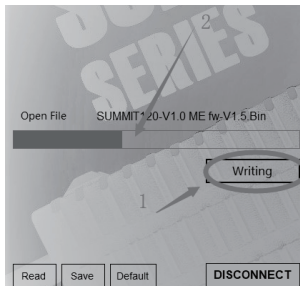
- ⑥ 点击“Open File”文字，  
打开升级版本文件。  
Click “Open File” to Open the  
upgrade File.



- ⑦ 找到所需的“Bin类型”文件，  
点击“打开”按钮。  
Find the required “Bin type” file  
and click the “Open” button.



- ⑧ 点击“Writing”按钮，  
观察安装进度条。  
Click the “Writing” button, observe  
the installation progress bar.



- ⑨ 安装完成后，点击“DISCONNECT”  
按钮。退出软件，并将适配器、电调  
和电源断开。

Click the “DISCONNECT”  
button after  
finishing installing. Exit the software,  
and disconnect the adapter , ESC  
and power supply.

