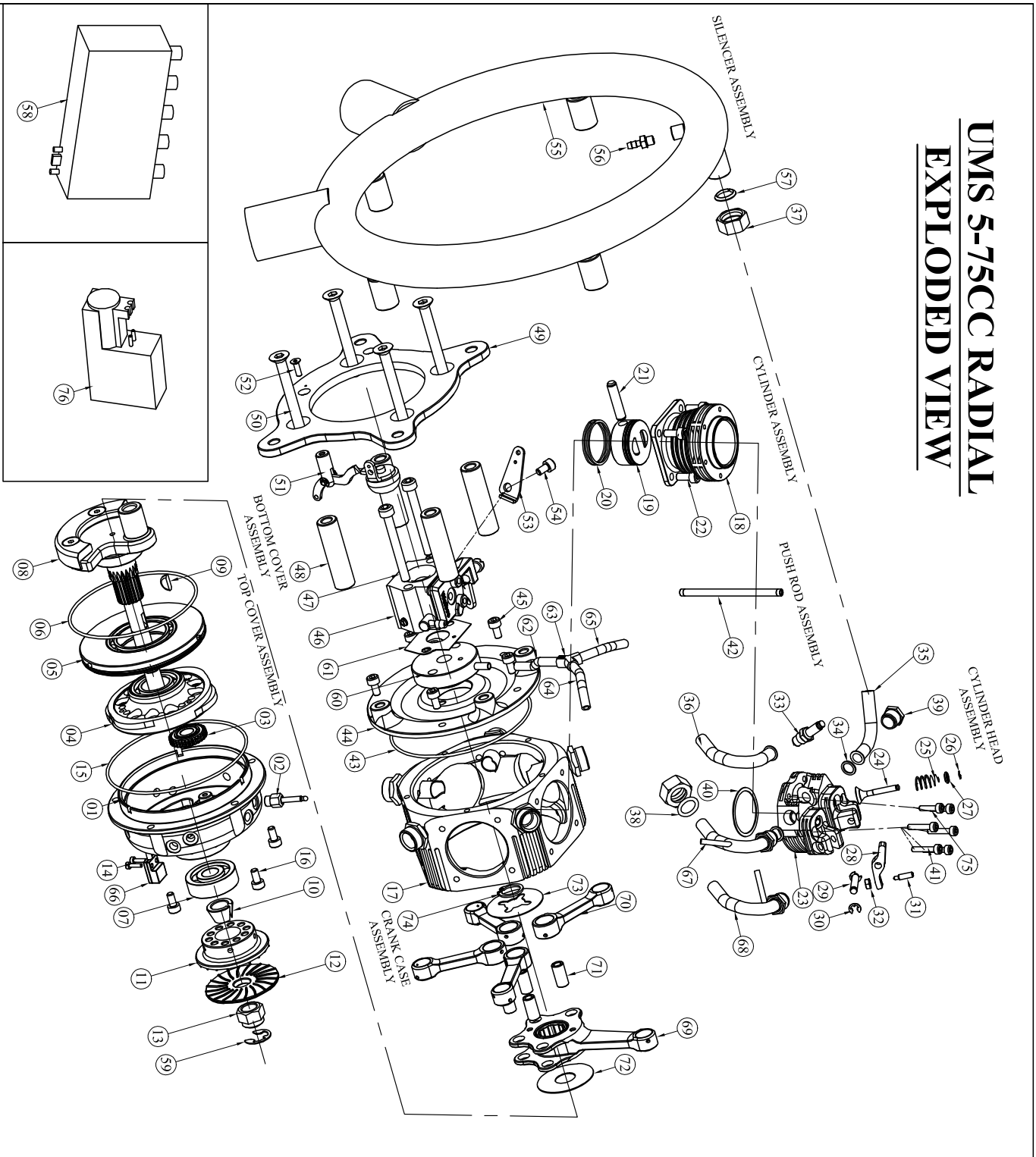


UMS 5-75CC RADIAL EXPLODED VIEW



SI NO	PART NO	PART NAME	REV	QTY
01	UMS97501080	TOP COVER WITH DOWN (03)	A	01
02	UMS112501160	CAM PIN GLIDE ASS'Y	A	10
03	UMS112501170	INTERMEDIATE GEAR WITH BRUSH	A	01
04	UMS975011900	CAM GEAR WITH BEARING	A	01
05	UMS99002200	SEALING RING WITH BEARING	O	01
06	ORR001670015	O-RING (SEALING RING)	O	01
07	BER031000500	BEARING (TOP COVER)	O	01
08	UMS975010400	CRANK SHAFT ASSEMBLY	A	01
09	UMS99002140	WOOD RUFF KEY	O	01
10	UMS99002100	PROPELLER DRIVE LOCK CONE	O	01
11	UMS97501070	PROPELLER DRIVE WITH MAGNET	A	01
12	UMS112501120	PROPELLER WASHER	O	01
13	EV007702900	PROPELLER DRIVE LOCK NUT	O	01
14	SSS63002080	SENSOR SCREW	O	02
15	ORR001780010	O-RING (TOP COVER)	O	01
16	SSS630040080	TOP COVER SCREW	O	05
17	UMS97502050	CRANK CASE WITH MAINFOLD	O	01
18	UMS97502050	CYLINDER WITH SLERVE	A	05
19	UMS97503050	PISTON	O	05
20	UMS97503050	PISTON RING	O	01
21	UMS97503070	PISTON PIN ASSEMBLY	O	05
22	SSS630040080	CYLINDER LOCKING SCREW	O	20
23	UMS97505010	CYLINDER HEAD WITH VALVE GUIDE	A	05
24	UMS99001040	VALVE	O	10
25	EV007702500	VALVE SPRING	O	10
26	ECR003019006	SPRING STAINER LOCK (CIRCLIP)	O	10
27	UMS99001050	SPRING STAINER	O	10
28	UMS99001050	ROCKER ARM	O	10
29	UMS99001070	ROCKER ARM PIN	O	10
30	ECR00303006	CIRCLIP (ROCKER ARM)	O	20
31	UMS99001180	ROCKER ARM SCREW	O	10
32	NI110000050	ROCKER ARM NUT	O	10
33	SPR02000020	SPARK PLUG	O	05
34	EV007702800	PIPE WASHER	O	10
35	UMS99001110	EXHAUST PIPE	O	03
36	UMS97505020	INLET PIPE	O	05
37	EV0077020300	LOCK NUT (IN)	A	10
38	ORR001660010	O-RING (INLET PIPE)	O	05
39	EV007702100	LOCK NUT (IN & EXHAUST)	O	08
40	UMS97505050	CYLINDER HEAD GASKET	O	05
41	SSS630050160	CYLINDER HEAD SCREW	O	20
42	UMS553005000	PUSH ROD ASSEMBLY	A	01
43	ORR001780010	O-RING (BOTTOM COVER)	O	01
44	UMS97506010	BOTTOM COVER	O	01
45	SSS630040080	BOTTOM COVER LOCK SCREW	O	10
46	CSR01000000	CARBURETTOR	O	01
47	SSS630050450	CARBURETTOR LOCK SCREW	O	02
48	UMS99000020	SPACER	O	04
49	UMS97506020	BASE PLATE	O	01
50	SC1130006050	BASE PLATE LOCK SCREW	O	04
51	UMS112506100	CHOKE LEVER ASSEMBLY	A	01
52	SC113003010	CHOKE LEVER ASSEMBLY LOCK SCREW	A	01
53	UMS118006100	THROTTLE LEVER G21	O	01
54	UMS118006110	THROTTLE LEVER SCREW	O	01
55	UMS97507010	SILENCER RING	O	01
56	UMS25007050	PRESSURE HEAD PIPE	O	01
57	EV007701300	SILENCER LOCK CONE	O	05
58	IGR05000001	IGNITION COIL	O	01
59	ECR001080010	CIRCLIP (CRANK SHAFT)	O	01
60	UMS112506110	ADAPTER PIPE CARBURETTOR	O	01
61	GKS10200000	CARBURETTOR GASKET	O	01
62	PT110406040	VACUUM TUBE	O	01
63	IGR10000011	V-CONNECTOR	O	01
64	PT110403050	VACUUM TUBE-A	O	01
65	PT110403050	VACUUM TUBE-B	O	01
66	HST10400000	HALL SENSOR	O	01
67	UMS97505030	INLET VACUUM PIPE-1	O	01
68	UMS97505040	INLET VACUUM PIPE-2	O	01
69	UMS97502080	CONNECTING ROD MAIN WITH BEARING	O	01
70	UMS97502050	CONNECTING ROD SMALL	O	04
71	EV007702400	CONNECTING ROD PIN	O	04
72	UMS97502050	SPRING WASHER INNER	O	01
73	UMS97502070	SPRING WASHER OUTER	O	01
74	ECR001110010	CIRCLIP (CRANK CONNECTING ROD)	O	01
75	SSS630050120	CYLINDER HEAD SCREW	O	10
76	FRX01000000	FILE, RNDP	O	01

REV	DATE	DETAIL
10	1441-19	ORIGINAL

DRAWING NO	DESCRIPTION
UMS975-10	UMS 5-75cc Radial Engine (PETROL)