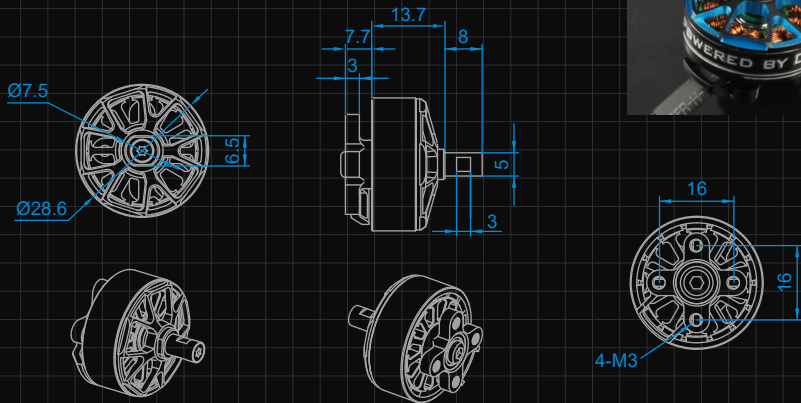


Dimension 尺寸图



* Please ask us for 3D design drawings.

Specification 参数

NAME 型号	XM2306TY-14	XM2306TY-17	XM2306TY-24
SKU 商品编码	52139	52140	52141
RPM / V (KV) KV值	2800	2320	1640
Weight (g) 重量		32	
Diameter (mm) 直径		28.6	
Length (mm) 长度		21.4	
Diameter of Shaft(mm) 轴径		5, hollow	
Pitch of holes (mm) 安装孔距		16/16	
Input Connectors 输入插头		GC2.0 , 3 Pairs	
Slots & Poles 槽数, 极数		12N14P	
Io@10V(A)空载电流	1.67 @7V	1.49	0.95
Resistance(Ri)(mOhm) 电机内阻	28.3	38	75
No. of Cells(LiPo) 适用电池	2 ¹ ..3	2..3 ¹	3 ¹ ..4
Max. EfficiencyCurrent(A) 效率电流	19.5	17.1	12.7
Max. Burst Current (15S)[A] 峰值电流	39	34.2	25.5
Max. Power(15S)[W] 峰值功率	312	410	306
Torque (mNM) 扭矩	190	201	212
Recommended ESC 推荐调速器	XC4018BA 15° (Middle)	XC4018BA 15° (Middle)	XC-33U-Lite 15° (Middle)
Propeller 螺旋桨	2S ¹ : 7x5, 8x4, 8x5 ² , 7x4 (3-Blade) 3S: 5x5, 6x3, 6x4, 5.1x4.3 (3-Blade)	2S: 8x4, 8x5, 9x5 ² , 8x4 (3-Blade) 3S ¹ : 6x5, 7x4, 7x5 ² , 6x4 (3-Blade)	3S ¹ : 8x4, 8x5, 9x4 ² , 8x4 (3-Blade) 4S: 6x4, 6x5, 7x4, 7x4 (3-Blade) ²
Applications 适用级别	F5K, eRES(F5L), ASFC P5B, FPV wings		

注: ¹ Suggested working voltage(NOC) 建议工作电压(串联节数)

² Good throttle management needed 可在有效控制油门的情况下使用

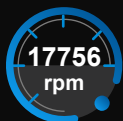
7.4V

XM2306TY-14 (2800KV)

Motor @ Optimum Efficiency 优化效率点



Current
电流



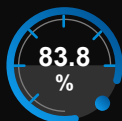
Revolutions
转速



electric Power
电功率



mech. Power
机械功率



Efficiency
效率

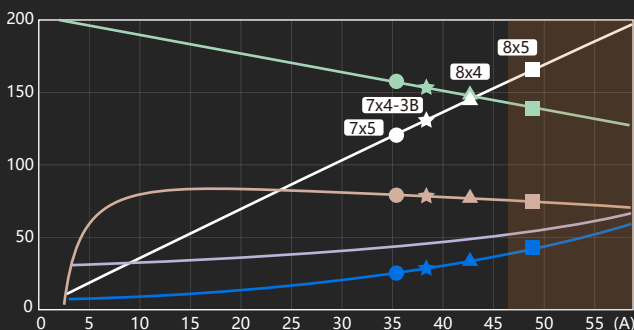
EL.POWER 电功率 [IN 2W]

EFFICIENCY 效率 [%]

MAX. REVOLUTIONS
转速 [IN 100RPM]

WASTE POWER
损耗功率 [IN 2W]

MOTOR CASE TEMP.
马达壳体温度 [°C]



Voltage 电压 (V)	Propeller 螺旋桨 (RPM)	Throttle 油门 (%)	Current 电流 (A)	el. Power 输入功率 (W)	Efficiency 效率 (%)	Thrust 静拉力 (g)	Spec. Thrust 螺旋桨效率 (g/W)
7x5							
	8800	50	6	43.6	81.9	357	8.2
	9900	57	8.6	61.9	82.2	452	7.3
	12100	72	15.9	113.4	81.9	676	6
	13200	81	20.9	148	81.5	804	5.4
	14300	89	27.1	189.3	81	944	5
	15540	100	36	248	79.8	1114	4.5
8x4							
	8800	52	8.4	60.3	80.9	427	7.1
	9900	60	12	86.2	80.6	540	6.3
	11000	68	16.8	119	80	667	5.6
	12100	77	22.7	159.9	79.3	807	5
	13200	86	30.2	209.7	78.5	960	4.6
	14627	100	43.2	293.2	76.9	1179	4
8x5							
	9000	56	11.5	82.3	79.2	558	6.8
	10000	63	16	113.9	78.5	689	6
	11000	72	21.8	153.3	77.7	833	5.4
	12000	81	29	201.4	76.8	992	4.9
	13000	90	37.9	259.3	75.8	1164	4.5
	13926	100	48.7	327	74.4	1336	4.1
7x4 (3-Blade)							
	8800	51	6.7	48.4	81.7	365	7.5
	9900	58	9.5	68.8	81.8	461	6.7
	12100	74	17.8	126.6	81.2	689	5.4
	13200	82	23.5	165.4	80.7	820	5
	14300	91	30.5	212	80.1	963	4.5
	15252	100	38.2	262.4	78.9	1095	4.2

7.4V
(2S LIPO)

11.1V

XM2306TY-14 (2800KV)

Motor @ Optimum Efficiency 优化效率点



Current
电流



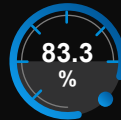
Revolutions
转速



electric Power
电功率



mech. Power
机械功率



Efficiency
效率

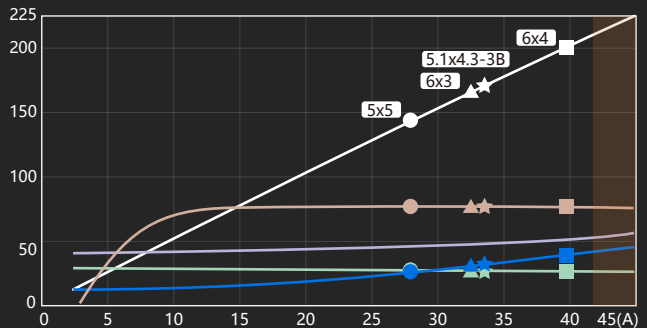
EL.POWER 电功率 [IN 2W]

EFFICIENCY 效率 [%]

MAX. REVOLUTIONS
转速 [IN 1000RPM]

WASTE POWER
损耗功率 [IN 2W]

MOTOR CASE TEMP.
马达壳体温度 [°C]



Voltage 电压 (V)	Propeller 螺旋桨 (RPM)	Throttle 油门 (%)	Current 电流 (A)	el. Power 输入功率 (W)	Efficiency 效率 (%)	Thrust 静拉力 (g)	Spec. Thrust 螺旋桨效率 (g/W)	
11.1V (3S LIPO)				5x5				
		14000	49	4.2	46.3	81	330	7.1
		16000	57	6.2	67.8	82.5	431	6.3
		20000	73	12	130.3	83.9	673	5.2
		22000	81	16.1	172.8	84.1	814	4.7
		24000	90	21	224.1	84.2	969	4.3
		26194	100	27.9	294.5	83.3	1154	3.9
					6x3			
		15200	55	6.6	71.6	83.3	403	5.6
		17100	62	9.3	101.1	84	510	5
		19000	70	12.8	138.2	84.3	629	4.6
		20900	78	17.1	183.7	84.4	762	4.1
		22800	87	22.4	238.5	84.4	906	3.8
		25537	100	32.5	340.5	83.3	1137	3.3
				6x4				
	14400	53	7.4	80.6	83.9	482	6	
	16200	60	10.5	114.2	84.3	610	5.3	
	18000	68	14.5	156.6	84.4	753	4.8	
	19800	76	19.6	208.7	84.2	911	4.4	
	21600	85	25.7	271.7	84	1085	4	
	24548	100	39.5	408.2	82.5	1401	3.4	
				5.1x4.3 (3-Blade)				
	15200	55	6.8	74	83.4	452	6.1	
	17100	63	9.6	104.5	84.1	572	5.5	
	19000	70	13.2	142.9	84.4	707	4.9	
	20900	79	17.7	190	84.5	855	4.5	
	22800	87	23.2	246.9	84.4	1018	4.1	
	25426	100	33.3	348.2	83.2	1265	3.6	

7.4V

XM2306TY-17 (2320KV)

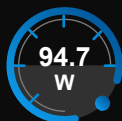
Motor @ Optimum Efficiency 优化效率点



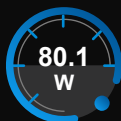
Current
电流



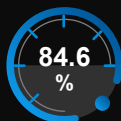
Revolutions
转速



electric Power
电功率



mech. Power
机械功率



Efficiency
效率

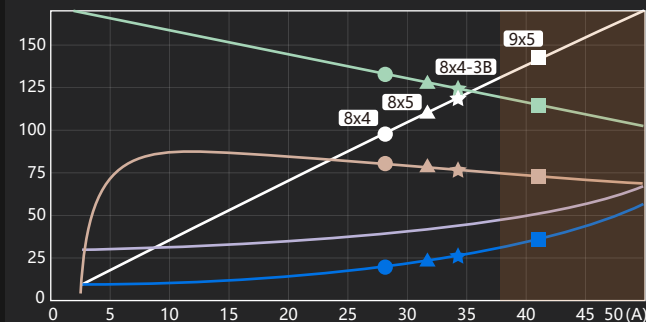
EL.POWER 电功率 [IN 2W]

EFFICIENCY 效率 [%]

MAX. REVOLUTIONS
转速 [IN 100RPM]

WASTE POWER
损耗功率 [IN 2W]

MOTOR CASE TEMP.
马达壳体温度 [°C]



Voltage 电压 (V)	Propeller 螺旋桨 (RPM)	Throttle 油门 (%)	Current 电流 (A)	el. Power 输入功率 (W)	Efficiency 效率 (%)	Thrust 静拉力 (g)	Spec. Thrust 螺旋桨效率 (g/W)
8x4							
8100	56	56	6.4	46.6	81.6	362	7.8
9000	64	64	8.8	63.9	81.7	446	7
9900	71	71	11.8	85.2	81.5	540	6.3
10800	79	79	15.5	111.1	81.1	643	5.8
11700	87	87	20	142.1	80.7	754	5.3
12982	100	100	28.2	197.6	79.5	929	4.7
8x5							
7200	51	51	5.7	41.5	80.5	357	8.6
8100	58	58	8.2	59	80.5	452	7.7
9000	66	66	11.3	81.3	80.2	558	6.9
10800	83	83	20.1	142.6	79	803	5.6
11700	92	92	26.1	183.1	78.3	943	5.2
12452	100	100	32.3	224.2	77.3	1068	4.8
9x5							
7200	55	55	9.6	69.4	77.1	508	7.3
8000	63	63	13.5	96.3	76.2	628	6.5
8800	71	71	18.3	129.8	75.2	760	5.8
9600	80	80	24.4	171	74.2	904	5.3
10400	89	89	31.9	220.7	73.1	1061	4.8
11226	100	100	41.7	284.1	71.6	1236	4.3
8x4 (3-Blade)							
7200	52	52	6.4	46.2	80.1	364	7.9
8100	59	59	9.1	65.9	79.8	461	7
9000	67	67	12.7	91	79.3	569	6.3
9900	76	76	17.2	122.2	78.6	68	5.6
10800	85	85	22.7	160.2	77.9	820	5.1
12199	100	100	34.2	236.8	76.2	1046	4.4

7.4V
(2S LIPO)

11.1V

XM2306TY-17 (2320KV)

Motor @ Optimum Efficiency 优化效率点



Current
电流



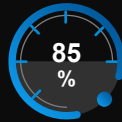
Revolutions
转速



electric Power
电功率



mech. Power
机械功率



Efficiency
效率

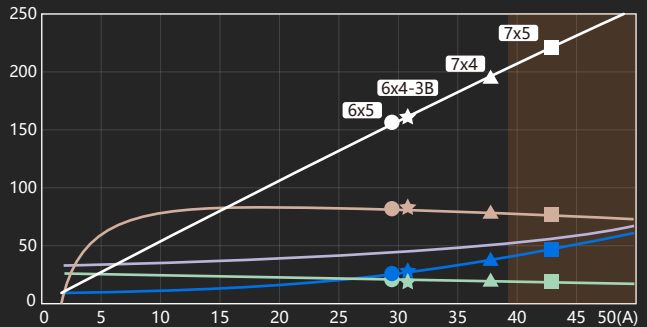
EL.POWER 电功率 [IN 2W]

EFFICIENCY 效率 [%]

MAX. REVOLUTIONS
转速 [IN 1000RPM]

WASTE POWER
损耗功率 [IN 2W]

MOTOR CASE TEMP.
马达壳体温度 [°C]



Voltage 电压 (V)	Propeller 螺旋桨 (RPM)	Throttle 油门 (%)	Current 电流 (A)	el. Power 输入功率 (W)	Efficiency 效率 (%)	Thrust 静拉力 (g)	Spec. Thrust 螺旋桨效率 (g/W)
6x5							
11200	49	4.3	47.7	83.4	365	7.6	
12800	57	6.4	70.4	84.4	476	6.8	
16000	73	12.6	136.5	84.9	744	5.4	
17600	81	16.9	181.9	84.8	900	4.9	
19200	90	22.2	236.9	84.6	1071	4.5	
20828	100	29.1	306.7	83.7	1261	4.1	
7x4							
12000	55	7.9	86.5	83.8	532	6.1	
13500	63	11.4	123.3	83.7	673	5.5	
15000	71	15.8	169.7	83.4	831	4.9	
16500	80	21.3	227.2	83	1005	4.4	
18000	89	28.2	297.1	82.4	1196	4	
19598	100	37.8	391.2	81.1	1418	3.6	
7x5							
11200	52	8.2	88.8	83	579	6.5	
12600	60	11.7	126.9	82.7	733	5.8	
14000	68	16.3	175.1	82.2	904	5.2	
15400	76	22.1	234.9	81.6	1094	4.7	
16800	85	29.3	307.7	80.8	1302	4.2	
18814	100	43.3	443.6	79.2	1633	3.7	
6x4 (3-Blade)							
12000	53	5.9	64.4	84.1	427	6.6	
13500	61	8.4	91.1	84.6	540	5.9	
15000	68	11.5	124.8	84.7	667	5.3	
16500	76	15.5	166.4	84.6	807	4.9	
19500	93	26.1	276.5	84	1127	4.1	
20532	100	31.2	327.4	83.2	1250	3.8	

11.1V
(3S LIPO)

11.1V

XM2306TY-24 (1640KV)

Motor @ Optimum Efficiency 优化效率点



Current
电流



Revolutions
转速



electric Power
电功率



mech. Power
机械功率



Efficiency
效率

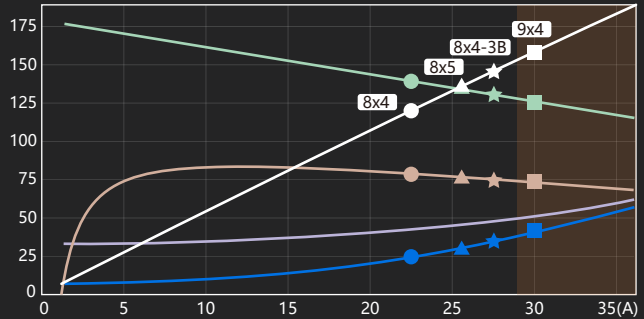
EL.POWER 电功率 [IN 2W]

EFFICIENCY 效率 [%]

MAX. REVOLUTIONS
转速 [IN 100RPM]

WASTE POWER
损耗功率 [IN 2W]

MOTOR CASE TEMP.
马达壳体温度 [°C]



Voltage 电压 (V)	Propeller 螺旋桨 (RPM)	Throttle 油门 (%)	Current 电流 (A)	el. Power 输入功率 (W)	Efficiency 效率 (%)	Thrust 静拉力 (g)	Spec. Thrust 螺旋桨效率 (g/W)
11.1V (3S LIPO)	8x4						
	8000	52	4.1	45.2	81.1	353	7.8
	9000	59	5.9	64.2	81.3	446	7
	10000	67	8.1	88.3	81.1	551	6.2
	11000	75	10.9	118	80.7	667	5.6
	13000	92	18.4	197.6	79.6	931	4.7
	13824	100	22.8	242.5	78.4	1053	4.3
	8x5						
	8000	54	5.2	57.1	80.3	441	7.7
	9000	61	7.5	81.6	80	558	6.8
	10000	70	10.4	112.7	79.4	689	6.1
	11000	78	14	151.3	78.7	833	5.5
	12000	87	18.5	198.5	77.9	992	5
13268	100	26.1	275.9	76.2	1213	4.4	
9x4							
7200	49	5	54.2	78.9	407	7.5	
8100	57	7.1	77.7	78.4	515	6.6	
9900	72	13.4	144.8	76.9	769	5.3	
10800	81	17.7	190.3	75.9	915	4.8	
11700	90	23.1	245.1	74.9	1074	4.4	
12606	100	30	315.2	73.3	1247	4	
8x4 (3-Blade)							
8000	54	5.8	63.7	79.6	450	7.1	
9000	63	8.4	91.2	79.1	569	6.2	
10000	71	11.7	126.3	78.4	703	5.6	
11000	80	15.8	169.9	77.6	850	5	
12000	90	20.9	223.3	76.6	1012	4.5	
13003	100	27.6	291.8	75.1	1188	4.1	

14.8V

XM2306TY-24 (1640KV)

Motor @ Optimum Efficiency 优化效率点



Current
电流



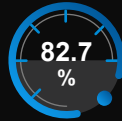
Revolutions
转速



electric Power
电功率



mech. Power
机械功率



Efficiency
效率

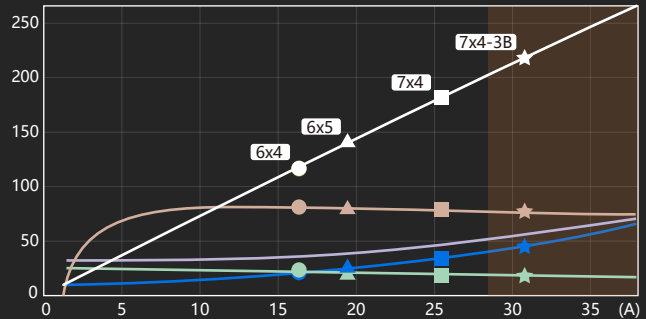
EL.POWER 电功率 [IN 2W]

EFFICIENCY 效率 [%]

MAX. REVOLUTIONS
转速 [IN 1000RPM]

WASTE POWER
损耗功率 [IN 2W]

MOTOR CASE TEMP.
马达壳体温度 [°C]



Voltage 电压 (V)	Propeller 螺旋桨 (RPM)	Throttle 油门 (%)	Current 电流 (A)	el. Power 输入功率 (W)	Efficiency 效率 (%)	Thrust 静拉力 (g)	Spec. Thrust 螺旋桨效率 (g/W)
14.8V (4S LIPO)				6x4			
	12000	55	3.3	48	81.6	335	7
	13500	62	4.6	67.4	82.6	424	6.3
	15000	70	6.3	91.8	83.2	523	5.7
	16500	78	8.4	121.7	83.6	633	5.2
	18000	86	10.9	157.8	83.7	753	4.8
	20593	100	16.7	239.5	82.7	986	4.1
				6x5			
	12000	56	4	59.2	82.7	418	7.1
	13500	63	5.7	83.6	83.3	530	6.3
	15000	71	7.8	114.3	83.6	654	5.7
	16500	79	10.5	152	83.7	791	5.2
	18000	88	13.7	197.6	83.6	942	4.8
	20082	100	19.5	279.5	82.3	1172	4.2
				7x4			
	11200	53	4.9	71.1	82.9	463	6.5
	12600	61	6.9	101.1	83	586	5.8
	14000	69	9.6	138.9	82.9	724	5.2
	15400	77	12.8	185.6	82.6	876	4.7
	16800	85	16.9	242.2	82.1	1042	4.3
19021	100	25.5	361.4	80.4	1336	3.7	
			7x4 (3-Blade)				
10400	51	5.4	79.6	82.1	509	6.4	
11700	58	7.8	113.6	81.8	645	5.7	
14300	74	14.6	210.1	80.8	963	4.6	
15600	83	19.3	275.2	80.1	1146	4.2	
16900	92	24.9	353.2	79.3	1345	3.8	
18000	100	31.3	438.5	77.8	1526	3.5	