

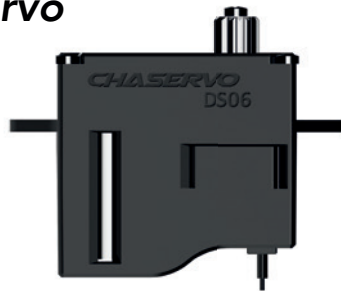
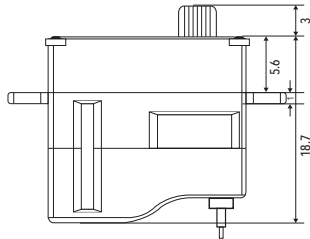
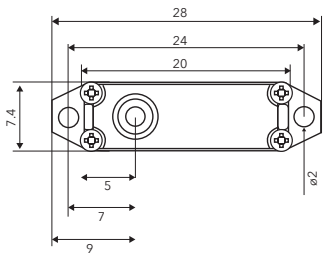
CHASERVO

DS06 / 15T 7,4mm Digital Servo

Technische Daten / Technical Data



DS06 15T 7,4mm Digital Servo



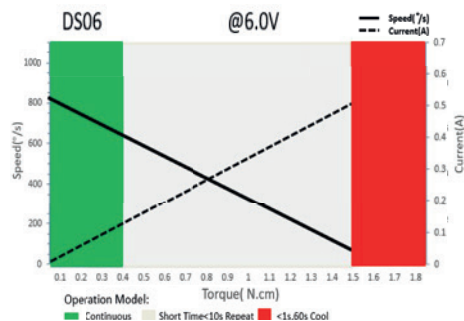
Performance Champion

Ob Wettbewerb, Training oder Zeitvertreib, auf die Komponenten muss jederzeit Verlass sein. **CHASERVO** kombiniert weltmeisterliche Performance und Verarbeitung - damit dem nächsten Triumph nichts mehr im Wege steht.

Präzise. Aus Prinzip.

Whether competition, training or pastime. The reliability of the components is what counts. **CHASERVO** combines world-champion performance and workmanship - so nothing stands in the way of your next victory.

Precise. On principle.



Servo Data

Rated Voltage	DC6.0V
Voltage Range	DC3.5V-8.4V
Stalling Torque	0.8N.cm@3.8V
	1.5N.cm@6.0V
	1.8N.cm@8.4V
No-load Speed	0.12sec/60°@3.8V
	0.08sec/60°@6.0V
	0.07sec/60°@8.4V
Blocking current	0.58A@6.0V
Rated torque	0.4N.cm@6.0V
Rated current	0.22A@6.0V
Rated speed	0.20sec/60°@6.0V
Operating frequency	1520us/20KHz
Default angle	±60° = 120°
Operating temperature	-10°C - +65°C
Soft Start	Yes

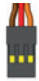
CHASERVO

Programmable	Yes
Ball Bearing	2BB
Case Material	High-strength technopolymer
Motor Type	Hollow Cup DC Motor
Gear Material	Hardened steel gears
Position Sensors	Potentiometer
Dimension / Weight	20mm*7.4mm*18.7mm±0.2mm / 6g

Command Signal / PWM Interface

Signal voltage level	High level:min.3.3V,max.5.0V Low level:min.0.0V,max.1.5V
Pulse range	900us-2100us
Pulse Corresponding Angle	1000us/1500us/2000us -60°/0°/+60°

Electrical Connection

 3 2 1	1	Orange	PWM	PWM Command Signal
	2	Red	DC+	Supply Voltage
	3	Brown	DC-	Supply Ground, Signal Ground

CHASERVO

Championship Performance

AKATJA GmbH

Burgwaldring 13

86697 Oberhausen-Kreut



www.chaservo.de