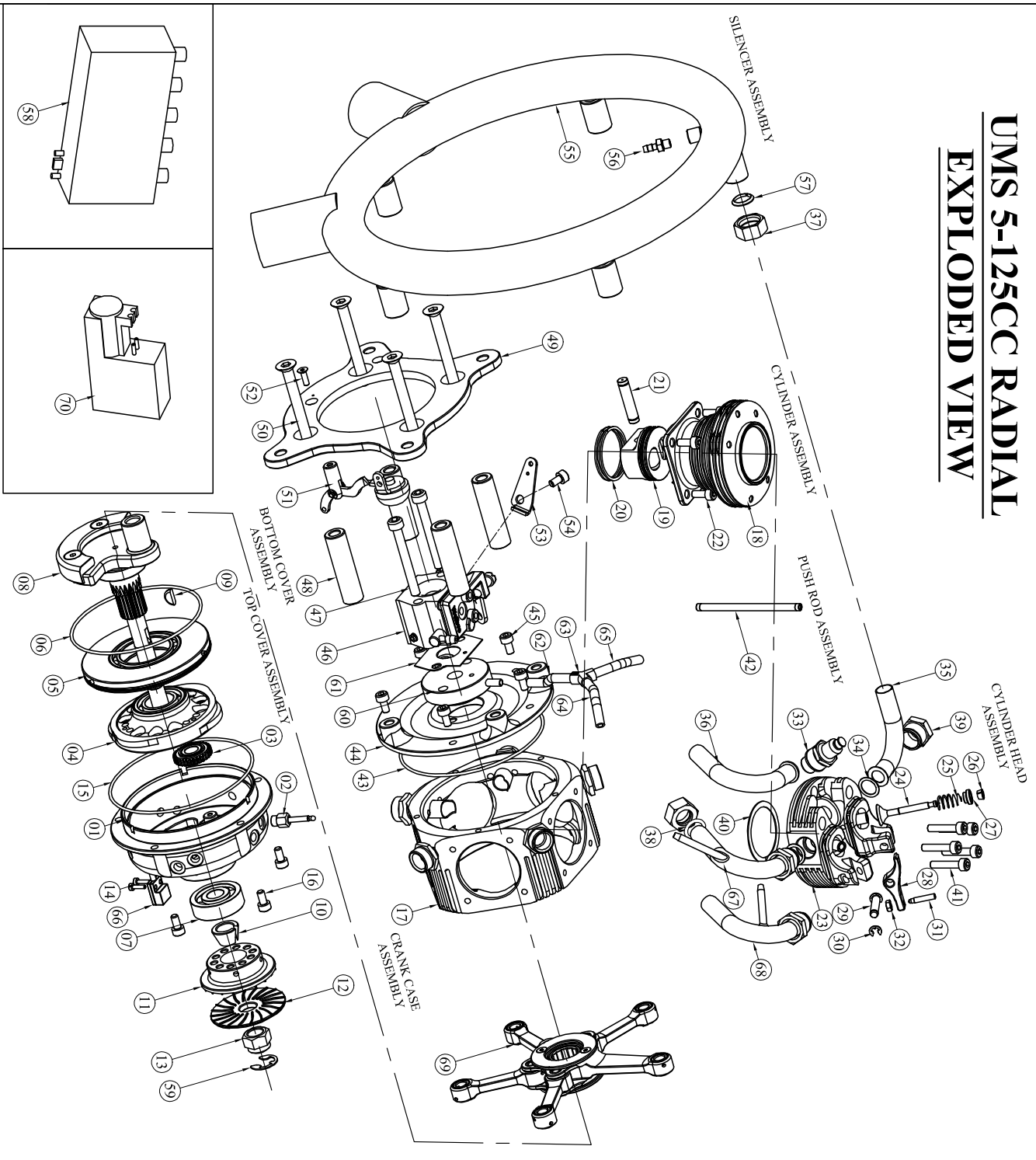


# UMS 5-125CC RADIAL EXPLODED VIEW



SI NO	PART NO	PART NAME	REV	QTY
01	UMS512501150	TOP COVER WITH DOWNEL (03)	A	01
02	UMS512501160	CAM PIN GUIDE ASSEMBLY	A	10
03	UMS512501170	INTERMEDIATE GEAR WITH BUSH	A	01
04	UMS512501180	CAM GEAR WITH BEARING	A	01
05	UMS529002200	SEALING RING WITH BEARING	O	01
06	ORR001670015	O-RING (SEALING RING)	O	01
07	BGR03100500	BEARING (TOP COVER)	O	01
08	UMS512501070	CRANK SHAFT ASSEMBLY	A	01
09	UMS529002140	WOOD RUFF KEY	O	01
10	UMS529002100	PROPELLER DRIVE LOCK CONE	O	01
11	UMS507501070	PROPELLER DRIVE WITH MAGNET	A	01
12	UMS512501120	PROPELLER WASHER	O	01
13	EV007702900	PROPELLER DRIVE LOCK NUT	O	01
14	SSS630020080	SENSOR SCREW	O	02
15	ORR001780010	O-RING (TOP COVER)	O	01
16	SSS630040080	TOP COVER SCREW	O	05
17	UMS512502501	CRANK CASE WITH MAINFOLD	O	01
18	UMS512502501	CYLINDER WITH SLERVE	A	05
19	UMS512503070	PISTON	O	05
20	UMS512503060	PISTON RING	O	01
21	UMS512503050	PISTON PIN ASSEMBLY	O	05
22	SSS630040000	CYLINDER LOCKING SCREW	O	20
23	UMS516001030	CYLINDER HEAD WITH VALVE GUIDE	C	05
24	UMS512505010	VALVE	O	10
25	EV0071600500	VALVE SPRING	O	10
26	UMS516001070	SPRING STAINER LOCK (BUSH)	O	10
27	UMS516001060	SPRING STAINER	O	10
28	UMS512505020	ROCKER ARM	B	10
29	UMS516001080	ROCKER ARM PIN	A	10
30	ECR00003006	CIRCLIP (ROCKER ARM)	O	20
31	UMS512505060	ROCKER ARM SCREW	O	10
32	NI110000050	ROCKER ARM NUT	O	10
33	SRP020100000	SPARK PLUG	O	05
34	UMS518004090	PIPE WASHER	O	10
35	UMS512505090	EXHAUST PIPE	O	03
36	UMS512505030	INLET PIPE	O	03
37	EV0071600300	LOCK NUT (IN)	O	10
38	UMS516004080	TUFLON BUSH	O	05
39	EV00716003100	LOCK NUT (IN & EXHAUST)	O	08
40	UMS516001160	CYLINDER HEAD GASKET	O	05
41	SSS630040200	CYLINDER HEAD SCREW	O	25
42	ORR001780010	O-RING (BOTTOM COVER)	O	10
43	UMS512506010	BOTTOM COVER	O	01
44	UMS512506010	BOTTOM COVER LOCK SCREW	O	05
45	SSS630040080	CARBURETTOR	O	01
46	CSR001000000	CARBURETTOR LOCK SCREW	O	02
47	SSS630040500	CARBURETTOR SPRINGER	O	04
48	UMS518006020	BASE PLATE	O	01
49	UMS512506040	BASE PLATE LOCK SCREW	O	04
50	SC1130060600	CHOKE LEVER ASSEMBLY	A	01
51	UMS512506100	CHOKE LEVER ASSEMBLY LOCK SCREW	A	01
52	SC1130030101	THROTTLE LEVER G21	O	01
53	UMS5180060100	THROTTLE LEVER SCREW	O	01
54	UMS5180060110	SILENCER RING	O	01
55	UMS512507010	PRESSURE HEAD NIPPLE	O	01
56	UMS518007050	SILENCER LOCK CONE	O	05
57	UMS518007050	IGNITION COIL	O	01
58	IGR005000010	CIRCLIP (CRANK SHAFT)	O	01
59	EEER001080010	ADAPTER PIPE CARBURETTOR	O	01
60	UMS512506110	CARBURETTOR GASKET	O	01
61	GKS002000000	VACUUM TUBE	O	01
62	PLT104006040	V-CONNECTOR	O	01
63	PLT104006040	VACUUM TUBE-A	O	01
64	PLT104006040	VACUUM TUBE-B	O	01
65	PLT104006040	HALL SENSOR	O	01
66	HSR104000000	INLET VACUUM PIPE-1	O	01
67	UMS512505040	CONNECTING ROD ASSEMBLY	O	01
68	UMS512505050	FUEL PUMP	O	01
69	UMS512502100		O	01
70	FRX001600000		O	01

REV	DATE	DETAIL
10	1441-1-9	ORIGINAL

DRAWING NO	DESCRIPTION
UMSR5125-10	UMS 5-125cc Radial Engine (PETROL)