

软件下载地址 Download



Dualsky Summit Config V1.41

物品清单 List of items



适配器 Adapter x1



HV 系列连接线 x1
For SUMMIT HV and other devices

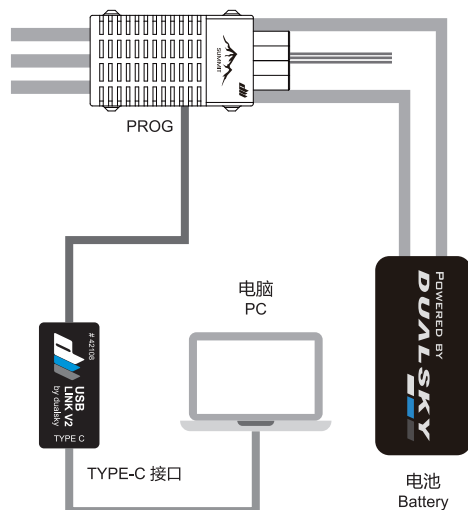


LV 系列连接线 x1
For SUMMIT LV series

操作步骤 Operation steps

- 1 如图所示连接适配器、电调。适配器 TYPE-C 接口通过 USB 线连接至电脑，然后接通电调的电源（动力电池）。电调指示灯应常亮。

Connect adapter and ESC according to wiring diagram. The type-c interface of the adapter is connected to the computer by USB cable. Then connect the power battery to the ESC. ESC indicator should be constant on.

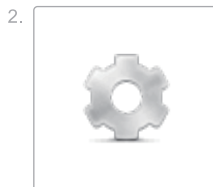


- 2 运行 Config 软件前，请先安装驱动程序。然后打开专用软件。

Install the driver before running the Config software.

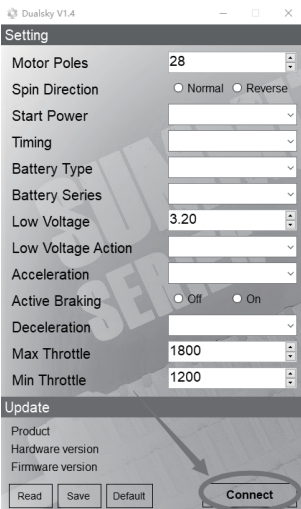
1. CP210xVCPInstaller_x64

Open Dualsky Summit Config V1.41

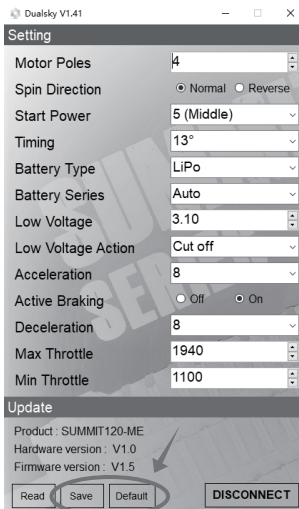


Dualsky Summit Config V1.41

- ③ 点击“Connect”按钮。
Press “Connect” button.



- ④ 然后便可按照需要进行参数设置。
Then set the parameter as needed.



点击 **Save** 保存设定参数。

Click **Save** Save the setting values.

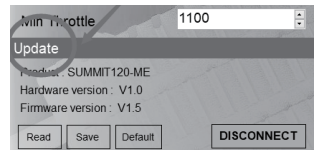
----- 或 or -----

点击 **Default** 恢复设备默认参数，
再按 **Save** 进行保存。

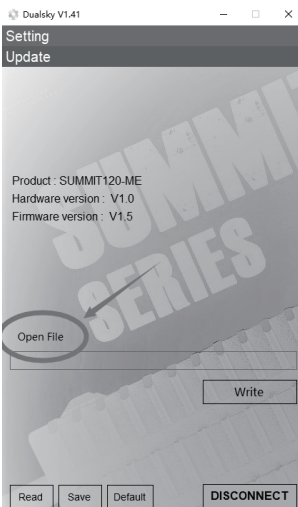
Click **Default** Back to the factory defaults,
then click **Save** to save the values.

- ⑤ 点击“Update”文字，
升级设备固件。

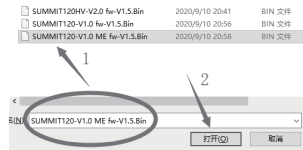
Click “Update” to upgrade the
firmware of device.



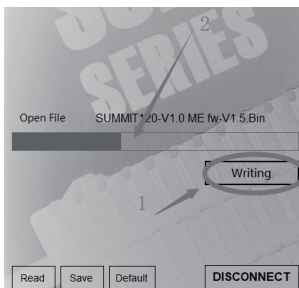
- ⑥ 点击“Open File”文字，
打开升级版本文件。
Click “Open File” to Open the
upgrade File.



- ⑦ 找到所需的“Bin类型”文件，
点击“打开”按钮。
Find the required “Bin type” file
and click the “Open” button.



- ⑧ 点击“Writing”按钮，
观察安装进度条。
Click the “Writing” button, observe
the installation progress bar.



- ⑨ 安装完成后，点击“DISCONNECT”
按钮。退出软件，并将适配器、电调
和电源断开。

Click the “DISCONNECT”
button after
finishing installing. Exit the software,
and disconnect the adapter , ESC
and power supply.

