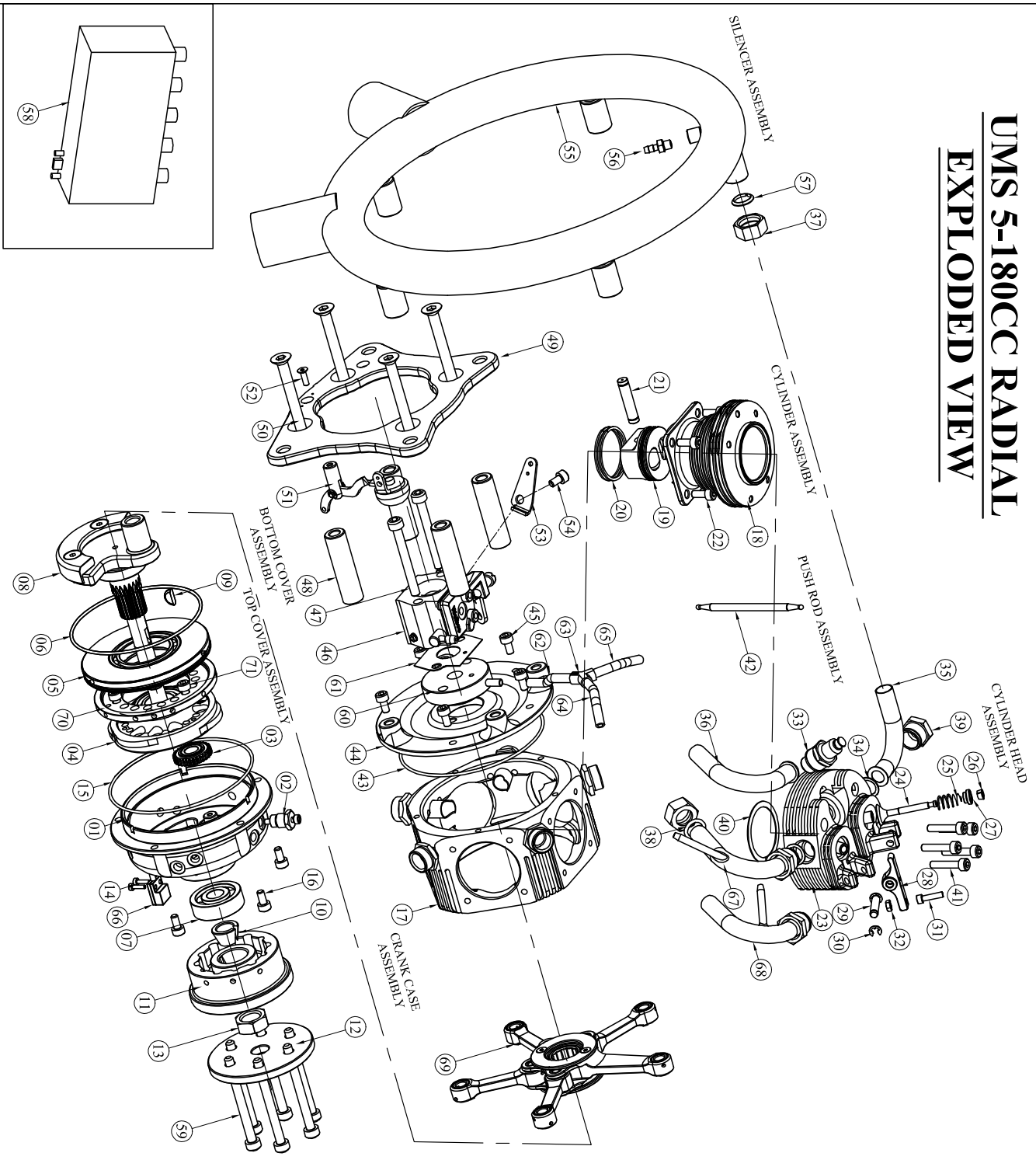


# UMS 5-180CC RADIAL EXPLODED VIEW



SI NO	PART NO	PART NAME	REV	QTY
01	UMS18001120	TOP COVER WITH DOWNEL (G)	A	01
02	UMS18001116	CAM PIN GLIDE ASSY	O	10
03	TMH52902164	INTERMEDIATE GEAR WITH BEARING	O	01
04	UMS18001130	CAM GEAR WITH BEARING	O	01
05	UMS18001140	SEALING RING WITH BEARING	A	01
06	ORRD01730015	O-RING (SEALING RING)	O	01
07	BERD03120280	BEARING (TOP COVER)	O	01
08	UMS18001150	CRANK SHAFT ASSEMBLY	A	01
09	UMS79902140	WOOD RUFF KEY	O	01
10	UMS18001100	PROPELLER DRIVE LOCK CONE	A	01
11	UMS18001290	PROPELLER DRIVE WITH MAGNET	O	01
12	TMH52902100	PROPELLER WASHER	O	01
13	TMH52902130	PROPELLER DRIVE LOCK NUT	O	01
14	SSS63002080	SENSOR SCREW	O	02
15	ORRD01800015	O-RING (TOP COVER)	O	20
16	SSS63004080	TOP COVER SCREW	O	10
17	UMS52100250	CRANK CASE WITH MANIFOLD	O	10
18	UMS18003250	CYLINDER WITH SLEEVE	A	05
19	UMS18003070	PISTON	O	05
20	EVOT26004080	PISTON RING	O	10
21	UMS18003050	PISTON PIN ASSEMBLY	O	05
22	SSS630040100	CYLINDER LOCKING SCREW	O	20
23	UMS18004030	CYLINDER HEAD WITH VALVE GLIDE	C	05
24	UMS18004040	VALVE	O	10
25	UMS18004130	VALVE SPRING	O	10
26	TMH52901200	SPRING STAINER LOCK (R/SH)	O	10
27	TMH52901050	SPRING STAINER	A	10
28	UMS18004140	ROCKER ARM WITH BUSH	A	10
29	TMH52901080	ROCKER ARM PIN	B	10
30	ECRD0030306	CIRCULAR (ROCKER ARM)	O	20
31	TMH52901090	ROCKER ARM SCREW	O	10
32	NIL10000050	ROCKER ARM NUT	O	10
33	SRD20100020	SPARK PLUG	O	05
34	UMS18004090	PIPE WASHER	O	10
35	UMS18004080	EXHAUST PIPE	O	03
36	UMS18004070	INLET PIPE	O	03
37	EVOT16003000	LOCK NUT (IN)	O	10
38	UMS16004080	TUFLON BUSH	O	05
39	EVOT16003100	LOCK NUT (IN & EXHAUST)	O	08
40	SSS18004066	CYLINDER HEAD GASKET	O	05
41	SSS30040200	CYLINDER HEAD SCREW	O	25
42	UMS18005000	PUSH ROD ASSEMBLY	A	10
43	ORRD01800015	O-RING (BOTTOM COVER)	O	01
44	UMS18006010	BOTTOM COVER	O	01
45	SSS30040080	BOTTOM COVER LOCK SCREW	O	10
46	CSB201000000	CARBURETTOR	O	01
47	SSS63004050	CARBURETTOR LOCK SCREW	O	02
48	UMS18006020	CARBURETTOR SPRINGER	O	04
49	UMS21006010	BASE PLATE	O	01
50	SC1130006000	BASE PLATE LOCK SCREW	O	04
51	UMS18006120	CHOKER LEVER ASSEMBLY	A	01
52	SC1130003010	CHOKER LEVER ASSEMBLY LOCK SCREW	A	01
53	UMS18006100	THROTTLE LEVER G21	O	01
54	UMS18006110	THROTTLE LEVER SCREW	O	01
55	UMS18007010	SILENCER RING	O	01
56	TMH52907050	PRESSURE HEAD NIPPLE	O	01
57	UMS18007050	SILENCER LOCK CONE	O	05
58	IGRD05000010	IGNITION COIL	O	01
59	SSS63005050	PROPELLER LOCK SCREW	O	06
60	TMH52906100	ADAPTER PIPE CARBURRETTOR	A	01
61	GKSHD2000000	CARBURETTOR GASKET	O	01
62	PLT10406040	VACUUM TUBE	O	01
63	LG4VCONC0011	V-CONNECTOR	O	01
64	PLT10406040	VACUUM TUBE-A	O	01
65	PLT10406040	VACUUM TUBE-B	O	01
66	H5F104000000	HALL SENSOR	O	01
67	UMS18004100	INLET VACUUM PIPE-1	O	01
68	UMS18004110	INLET VACUUM PIPE-2	O	01
69	UMS18002090	CONNECTING ROD ASSEMBLY	A	01
70	UMS18001170	MAGNET RING WITH MAGNET	A	01
71	SSS63004080	SCREW MAGNET RING	O	05

REV	DATE	DETAIL
10	14.11.19	ORIGINAL

DRAWING NO	DESCRIPTION
UMSR5180-10	UMS 5-180cc Radial Engine (PETROL)