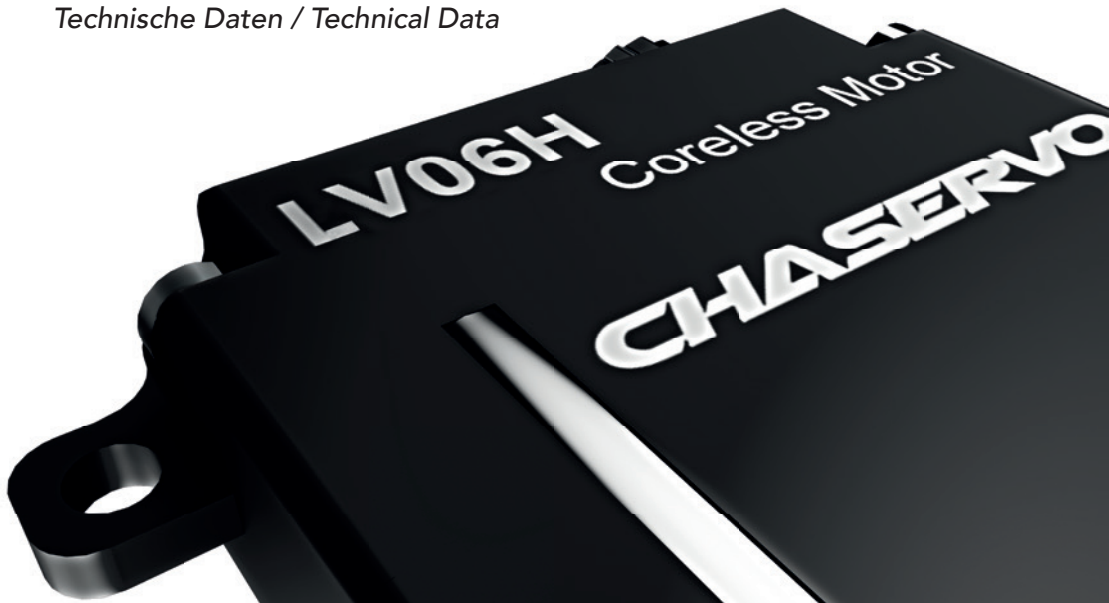


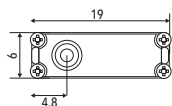
CHASERVO

LV06 / LV06H / LV06N

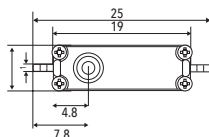
Technische Daten / Technical Data



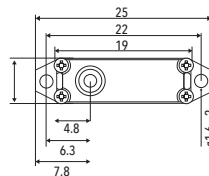
LV06 15T 6mm LV Servo



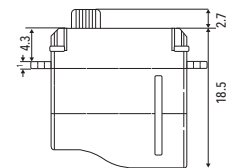
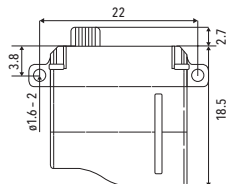
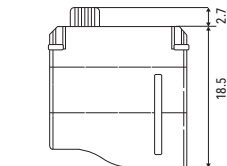
LV06N



LV06H

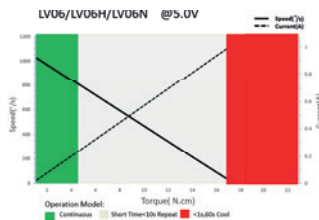


LV06



Maße in mm / Dimensions in mm

Performance



Chaservo

Ob Wettbewerb, Training oder Zeitvertreib – auf die Komponenten muss jederzeit Verlass sein. **CHASERVO** liefert weltmeisterliche Performance und höchste Verarbeitungsstandards zu Budgetfreundlichen konditionen. Damit dem nächsten Triumph nichts mehr im Wege steht.

Whether competition, training or pastime - the components must be reliable at all times. **CHASERVO** delivers world-class performance and the highest standards of workmanship at budget-friendly conditions. So that nothing stands in the way of the next triumph.

Servo Data

Rated Voltage	DC 4.2V
Voltage Range	DC 3.3V - 5.0V
Stalling Torque	9N.cm@3.3V
	13N.cm@4.2V 17N.cm@5.0V
No-load Speed	0.077sec/60°@3.3V
	0.066sec/60°@4.2V
	0.055sec/60°@5.0V
Default Travel Angle	$\pm 60^\circ = 120^\circ$ Total travel
Working Frequency	1520us/20KHz
Operating Temperature Range	-10°C ... +65°C
Case Material	Aluminum Alloy
Motor Type	Coreless DC Motor
Gear Set Material	Hardened Steel
Position Sensor	Potentiometer
Programmable	YES

CHASERVO

Ball Bearing	2BB
Case Dimensions	19mm*6mm*18.5mm ± 0.2 mm
Weight	5.8g $\pm 10\%$

Command Signal / PWM Interface

Signal voltage level	HIGH:min.3.3V,max.5.0V Low:min.0.0V,max.1.5V
Pulse range	900us-2100us
Pulse Corresponding Angle	1000us/1500us/2000us

Electrical Connection

<p>3 2 1</p>	1	Orange	PWM	PWM Command Signal
	2	Red	DC+	Supply Voltage
	3	Brown	DC-	Supply Ground, Signal Ground

www.chaservo.de

CHASERVO

Championship Performance

AKATJA GmbH

Burgwaldring 15

86697 Oberhausen-Kreut



www.chaservo.de