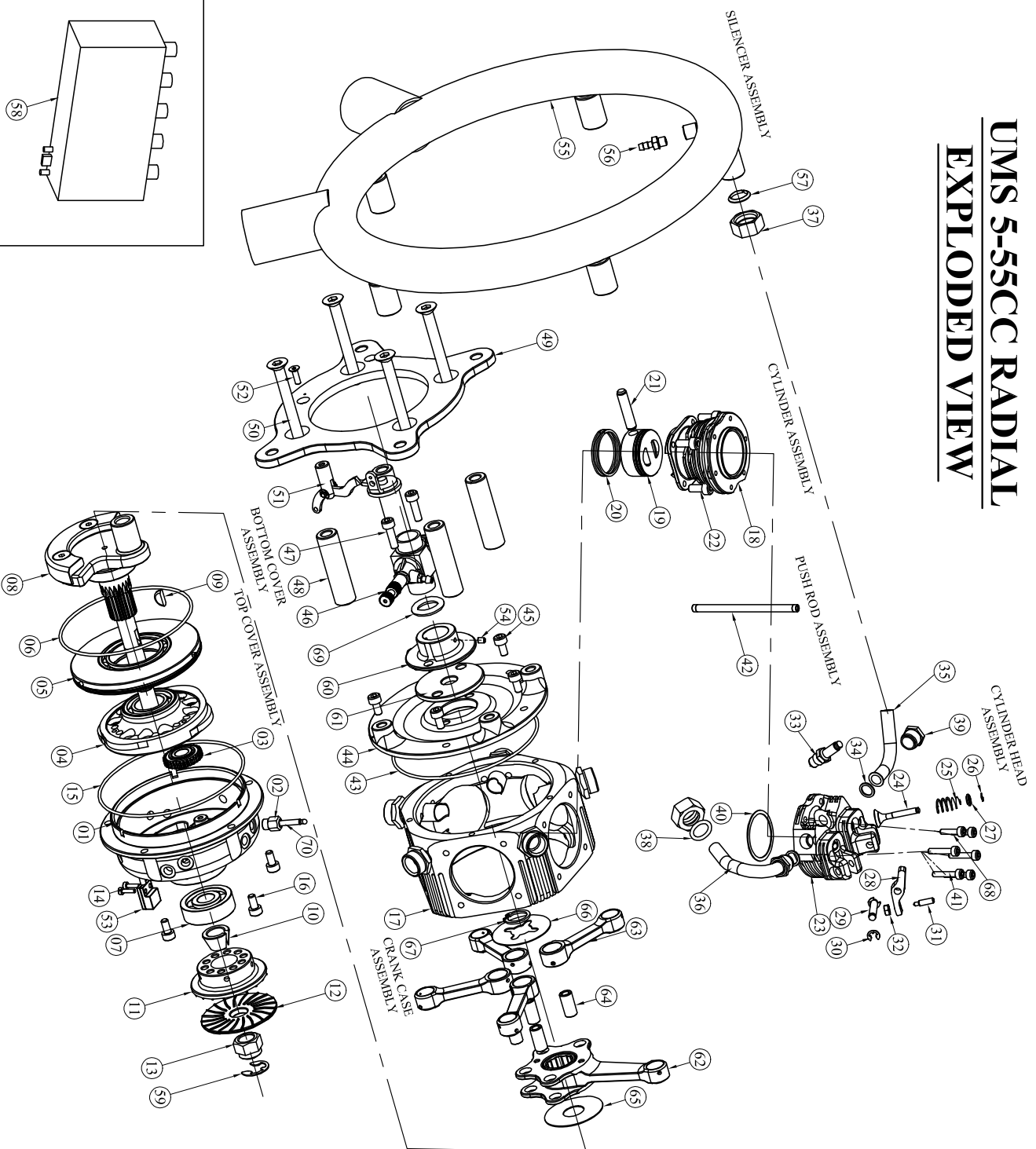


# UMS 5-55CC RADIAL EXPLODED VIEW



SI NO	PART NO	PART NAME	REV	QTY
01	UMS555001100	TOP COVER WITH DOWNEL (6)	A	01
02	EV0073504000	CAM PIN GLIDE	0	10
03	UMS555001120	INTERMEDIATE GEAR WITH BRUSH	0	01
04	UMS555001130	CAM GEAR WITH BEARING	0	01
05	UMS735002190	SEALING RING WITH BEARING	0	01
06	ORRD015000110	O-RING (SEALING RING)	0	01
07	BERD030002120	BEARING (TOP COVER)	0	01
08	UMS555001140	CRANK SHAFT ASSEMBLY	A	01
09	UMS790002140	WOOD RUFF KEY	0	01
10	UMS755002120	PROPELLER DRIVE LOCK CONE	0	01
11	UMS555001150	PROPELLER DRIVE WITH MAGNET	0	01
12	UMS755002090	PROPELLER WASHER	0	01
13	EV0073502900	PROPELLER DRIVE LOCK NUT	0	01
14	SSS630020080	SENSOR SCREW	0	02
15	ORRD015000110	O-RING (TOP COVER)	0	01
16	SSS630030080	TOP COVER SCREW	0	05
17	UMS555002020	CRANK CASE WITH MAINFOLD	0	01
18	UMS555002030	CYLINDER WITH SLERVE	A	05
19	UMS555003040	PISTON	0	05
20	EV0077004800	PISTON RING	0	01
21	EV0077025250	PISTON PIN ASSEMBLY	0	05
22	SSS630030080	CYLINDER LOCKING SCREW	0	20
23	UMS790001030	CYLINDER HEAD WITH VALVE GLIDE	C	05
24	UMS790001040	VALVE	0	10
25	EV0077025200	VALVE SPRING	0	10
26	ECR003019006	SPRING STAINER LOCK (CIRCLIP)	0	10
27	UMS790001050	SPRING STAINER	0	10
28	UMS790001060	ROCKER ARM	0	10
29	UMS790001070	ROCKER ARM PIN	0	10
30	ECR003003006	CIRCLIP (ROCKER ARM)	0	20
31	UMS790001180	ROCKER ARM SCREW	0	10
32	NI1100000150	ROCKER ARM NUT	0	10
33	SPR020000020	SPARK PLUG	0	05
34	EV007772800	PIPE WASHER	0	10
35	UMS555004040	EXHAUST PIPE	0	05
36	UMS555004010	INLET PIPE	0	05
37	EV0077020300	LOCK NUT (IN)	A	10
38	ORRD016000110	O-RING (INLET PIPE)	0	05
39	EV0077020100	LOCK NUT (IN & EXHAUST)	0	10
40	UMS790001080	CYLINDER HEAD GASKET	0	05
41	SSS630030160	CYLINDER HEAD SCREW	0	20
42	UMS555005000	PUSH ROD ASSEMBLY	A	01
43	ORRD015000110	O-RING (BOTTOM COVER)	0	01
44	UMS555006010	BOTTOM COVER	0	01
45	SSS630030080	BOTTOM COVER LOCK SCREW	0	05
46	UMS555006001	CARBURETOR	0	01
47	SSS630030100	CARBURETOR ADAPTER LOCK SCREW	0	02
48	UMS555006020	SPACER	0	04
49	UMS555006030	BASE PLATE	0	01
50	SC11300400900	BASE PLATE LOCK SCREW	0	04
51	UMS555006070	CHOKE LEVER ASSEMBLY	A	01
52	SC1130030101	CHOKE LEVER ASSEMBLY LOCK SCREW	A	01
53	HSR104000000	HALL SENSOR	0	01
54	SSS630030030	CARBURETOR LOCK SCREW	0	02
55	UMS555007010	SILENCER RING	0	01
56	UMS555007050	PRESSURE HEAD PIPE	0	01
57	EV0077719000	SILENCER LOCK CONE	0	05
58	IGRD05000001	IGNITION COIL	0	01
59	EERD01060007	CIRCLIP (CRANK SHAFT)	0	01
60	UMS755006010	ADAPTER (GL LOW ENGINE)	0	01
61	UMS750006010	INSUL ADAPTER (CARBURETOR)	0	01
62	UMS555002060	CONNECTING ROD MAIN WITH BEARING	0	01
63	EV0077020200	CONNECTING ROD SMALL	0	04
64	EV0077020300	CONNECTING ROD PIN	0	04
65	EV0073512400	SPRING WASHER INNER	0	01
66	EV0073503000	SPRING WASHER OUTER	0	01
67	ECR001000000	CIRCLIP (CRANK CONNECTING ROD)	0	01
68	SSS630030120	CYLINDER HEAD SCREW	0	10
69	ORRD0120002	O-RING (CARBURETOR)	0	01
70	EV0077716700	CAM PIN	0	10

REV	DATE	DETAIL
10	1441-19	ORIGINAL

DRAWING NO	DESCRIPTION
UMSR5055-10	UMS 5-55cc Radial Engine (PETROL)